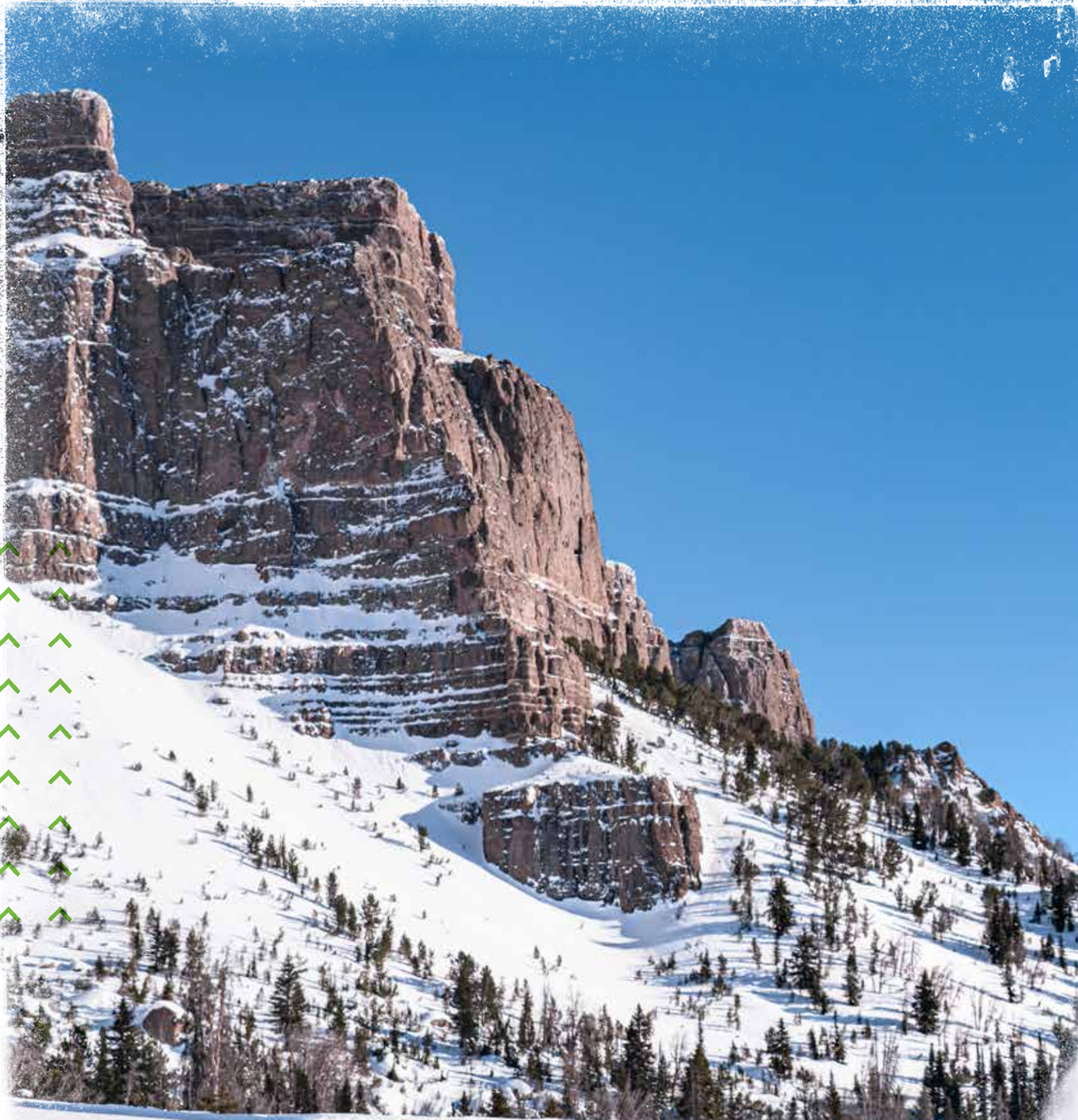


SNOWMOBILE ACCESSORIES 2022





FEATURED ON SLED:
PRO MTN BUMPER (BLACK) / 8639-197
MOUNTAIN PACK / 8639-031
HANDLEBAR BAG / 8639-186

ACCESSORIES

4	ACCESSORY KITS
12	COVERS
16	BAGS
20	TOURING
28	WINDSCREENS
32	CUSTOMIZE
42	YOUTH
48	PERFORMANCE
52	MOUNTAIN
66	TRACKS
68	TRACTION & CONTROL
74	GARAGE
78	BELTS
80	OIL & CARE

FEATURED ACCESSORIES

10	BLAST
20	TOURING
46	CROSSOVER
52	MOUNTAIN
64	TRAIL



A NEW ERA OF

TRouble MAKERS

FOR 60 YEARS, WE'VE SEEN WHAT KIND OF TROUBLE YOU CAN GET INTO ON A FRESH BED OF SNOW. TRAILS THAT BEG YOU TO OPEN THE THROTTLE. MOUNTAINS THAT BEG TO BE TAMED. ADVENTURES TO LAST A LIFETIME. THEY'RE THE JOURNEYS EVERY ARCTIC CAT IS BUILT FOR. WE'VE BEEN RAISING HELL AND RAISING THE BAR SINCE 1962.

NOW IT'S YOUR TURN.



CUSTOMIZATION SIMPLIFIED

With our best selling parts and accessories, we pre-designed and specifically made accessory kits to take each one of our sled models to the next level



MID-SIZE



ProClimb Bumper
(Black Tex)



Trail Pack



High Windshield

TRAIL BLAZER KIT

- 8639-390 ProClimb Bumper (Black Tex)
- 8639-363 Trail Pack
- 1616-089 High Touring Windshield (15")

8639-375 BLACK | '21-'22 BLAST ZR, '22 BLAST XR



ProClimb Bumper
(Black Tex)



Mountain Pack



Handlebar Bag

PRO KIT

- 8639-390 ProClimb Bumper (Black Tex)
- 8639-031 Mountain Pack
- 8639-364 Handlebar Bag

8639-370 BLACK | '21-'22 BLAST M



ProClimb Bumper
(Black Tex)



Hitch Kit



Handlebar Bag

WINTER ESSENTIALS KIT

- 8639-390 ProClimb Bumper (Black Tex)
- 8639-416 Hitch Kit
- 8639-364 Handlebar Bag

8639-368 BLACK | '21-'22 BLAST LT, '22 XR (ALL)

TRAIL



Pro Mtn Bumper
(Gloss Black)



Trail Pack



Handlebar Bag



Mid Touring
Windshield (15")

TRAIL BLAZER KIT

- 8639-197 Pro Mtn Bumper (Gloss Black)
- 8639-030 Trail Pack
- 8639-185 Handlebar Bag
- 7639-688 Mid Touring Windshield (15")

8639-434 BLACK | '18-'22 ZR 6/8000



Pro Bumper (Black)



Trail Pack



Handlebar Bag



Mid Touring
Windshield (15")

TRAIL BLAZER KIT

- 7639-301 Pro Bumper (Black)
- 8639-030 Trail Pack
- 8639-185 Handlebar Bag
- 7639-688 Mid Touring Windshield (15")

8639-377 BLACK | '17-'22 ZR 9000, THUNDERCAT



Pro Mtn Bumper
(Med Green)



Trail Pack



Handlebar Bag



Mid Touring
Windshield (15")

TRAIL BLAZER KIT

- 8639-189 Pro Mtn Bumper (Med Green)
- 8639-030 Trail Pack
- 8639-185 Handlebar Bag
- 7639-688 Mid Touring Windshield (15")

8639-376 MED GREEN | '18-'22 ZR 6/8000

CROSSOVER



Pro Mtn Bumper
(Black)



Mountain Pack



Handlebar Bag

PRO KIT

- 8639-197 Pro Mtn Bumper (Black)
- 8639-031 Mountain Pack
- 8639-186 Handlebar Bag

8639-371 BLACK | '18-'22 M 6/8000, RIOT X 8000



Pro Mtn Bumper
(Red)



Mountain Pack



Handlebar Bag

PRO KIT

- 8639-196 Pro Mtn Bumper (Red)
- 8639-031 Mountain Pack
- 8639-186 Handlebar Bag

8639-372 RED | '18-'22 M 6/8000, RIOT X 8000



Pro Mtn Bumper
(Black)



Mountain Pack



Team Arctic Hand
Guards



Mid Performance
Windscreen

FULL SEND KIT

- 8639-197 Pro Mtn Bumper (Black)
- 8639-031 Mountain Pack
- 8639-041 Team Arctic Hand Guards
- 7639-700 Mid Performance Windscreen (12")

8639-373 BLACK | '20-'22 RIOT 6/8000

MOUNTAIN



FEATURED ON SLED:
MOUNTAIN PACK / 8639-031
HANDLEBAR BAG / 8639-186



Pro Mtn Bumper
(Black)



Mountain Pack



Handlebar Bag



Pro Mtn Bumper
(Red)



Mountain Pack



Handlebar Bag

PRO KIT

- 8639-197 Pro Mtn Bumper (Black)
- 8639-031 Mountain Pack
- 8639-186 Handlebar Bag

8639-371 BLACK | '18-'22 M 6/8000, RIOT X 8000

PRO KIT

- 8639-196 Pro Mtn Bumper (Red)
- 8639-031 Mountain Pack
- 8639-186 Handlebar Bag

8639-372 RED | '18-'22 M 6/8000, RIOT X 8000

YOUTH



Tunnel Pack



Team Arctic Hand Guards



High Windshield (10")

STARTER KIT

- 7639-994 Tunnel Pack
- 8639-213 Team Arctic Hand Guards
- 7639-838 High Windshield (10")

8639-367 | '18-'22 ZR 200

UTILITY



Pro Bumper (Black Tex)



Cargo Bag



High Touring Windshield (18")

WINTER ESSENTIALS KIT

- 8639-179 Pro Bumper (Black Tex)
- 7639-764 Cargo bag
- 7639-383 High Touring Windshield (18")

8639-369 BLACK | '21-'22 NORSEMAN X

BLAST

JAW DROPPING FEATURES MEAN
FASTER TURNS, EASIER RIDES,
AND FEWER COMPROMISES.



BLAST FEATURED ACCESSORIES



TRAIL PACK

The Trail Pack is a compact storage unit for everything you need on the trail, from food to tools to electronics.

P. 17 | 8639-363



HEATED GOGGLE BAG

There's nothing worse than wet goggles, so we created a heated goggle bag that allows your goggles to stay warm and dry.

P. 19 | 8639-366



HIGH WINDSHIELD

Our high windshield provides the best protection from snow and wind.

P. 29 | 1616-089



PRO CLIMB BUMPER

Provides extra protection while giving your Cat extra style.

P. 36 | 8639-390

COVERS





CANVAS COVERS

- Excellent longevity from specially treated canvas
- Adjustable windshield strap provides a custom windshield/mirror fit
- 4 cinch-down side straps
- Adjustable hook-and-loop front fasteners
- Easy-access, zippered gas cap panel
- Trailerable
- Fits low, mid and high windshields and mirrors



8639-362 | '22 XR TOURING; '21-'22 BLAST LT, XR W/PASSENGER SEAT **NEW**

8639-001 | '12-'22 F; ZR; THUNDERCAT; XF 129-137-IN. **BEST SELLER**

8639-003 | '12-'22 M (ALL); RIOT X; XF HIGH COUNTRY; KING CAT 141-165-IN. **BEST SELLER**

8639-002 | '12-'22 F; ZR; THUNDERCAT; XF 129-141-IN. W/PASSENGER SEAT

8639-150 | '20-'22 RIOT; '20 RIOT X 146-IN.

8639-008 | '18-'22 NORSEMAN; '16-'17 BEARCAT 3000 LT 146-154-IN.

8639-152 | '18-'22 NORSEMAN W/PASSENGER SEAT

8639-360 | '21-'22 BLAST ZR 121-IN.

8639-361 | '21-'22 BLAST M, LT, XR

8639-011 | '18-'22 ZR 200

8639-012 | '18-'22 ZR 120

POLYESTER COVERS

- Provides excellent outdoor storage
- Fade-resistant, UV-protected polyester fabric
- Water-repellent coating
- Adjustable windshield strap provides a custom windshield/mirror fit
- Adjustable hook-and-loop front fasteners
- Easy-access, zippered gas cap panel
- 4 cinch-down side straps
- Trailerable

8639-328 | '12-'22 F; ZR; THUNDERCAT; XF 129-137-IN.

8639-329 | '12-'22 ZR; THUNDERCAT; XF; F 129-137-IN. **BEST SELLER**

PREMIUM COVERS

- The ultimate outdoor storage cover
- Fade-resistant, UV-protected, long-lasting premium Surlast™ fabric
- Water-repellent coating
- Adjustable windshield strap provides a custom windshield/mirror fit
- Cinch-down side attachments
- Adjustable hook-and-loop front spindle fasteners
- Easy-access, zippered gas cap panel
- Trailerable
- 129-137" models fit low, mid and high windshields and mirrors
- 141-165" models fit low and mid windshields

8639-392 | '12-'22 M (ALL); RIOT X; XF HIGH COUNTRY; KING CAT 141-165-IN.

8639-393 | '20-'22 RIOT; '20 RIOT X 146-IN.

8639-394 | '21-'22 RIOT X 146-IN.

8639-155 | '12-'22 F; ZR; THUNDERCAT; XF 129-137-IN.

8639-392 | '12-'22 M (ALL); RIOT X; XF HIGH COUNTRY; KING CAT 141-165-IN.

8639-160 | '12-'22 M (ALL); RIOT X; XF HIGH COUNTRY; KING CAT 141-165-IN.

8639-161 | '12-'22 M (ALL); RIOT X; XF HIGH COUNTRY; KING CAT 141-165-IN.

8639-155



8639-392



8639-160



8639-161



8639-393



8639-394





CUSTOM CANVAS COVERS

- Custom-fit options for non-current sled models
- Excellent longevity from specially treated canvas
- Cinch-down side attachments
- Adjustable hook-and-loop front fasteners
- Easy-access, zippered gas cap panel
- Trailerable

8639-004 | '15-'20 LYNX; '12-'14 F5, F570; '07-'11 F; '09-'11 Z1

8639-005 | '15-'20 LYNX LT; '15-'18 BEARCAT LT 2000; '08-'14 T570, TZ1; '09-'14 BEARCAT 570

8639-006 | '15-'19 PANTERA 3/6/7000

8639-007 | '16-'19 PANTERA 7000 XT LTD

8639-010 | '16-'19 BEARCAT 7000 XT

7639-998 | '15-'20 BC 2000 XT; '09-'15 BC XT

5639-017 | '03-'06 FIRECAT, SABERCAT 128-IN.

5639-018 | '99-'06 Z; ZL; ZR; ZRT; THUNDERCAT; T660 121-IN.

6639-044 | '06-'11 CROSSFIRE; '06-'07 M 136-141-IN.

5639-241 | '05-'11 M 153-IN.-162-IN.

5639-020 | '00-'06 PANTHER; PANTERA, T660 2-UP TOURING



SHOP COVER

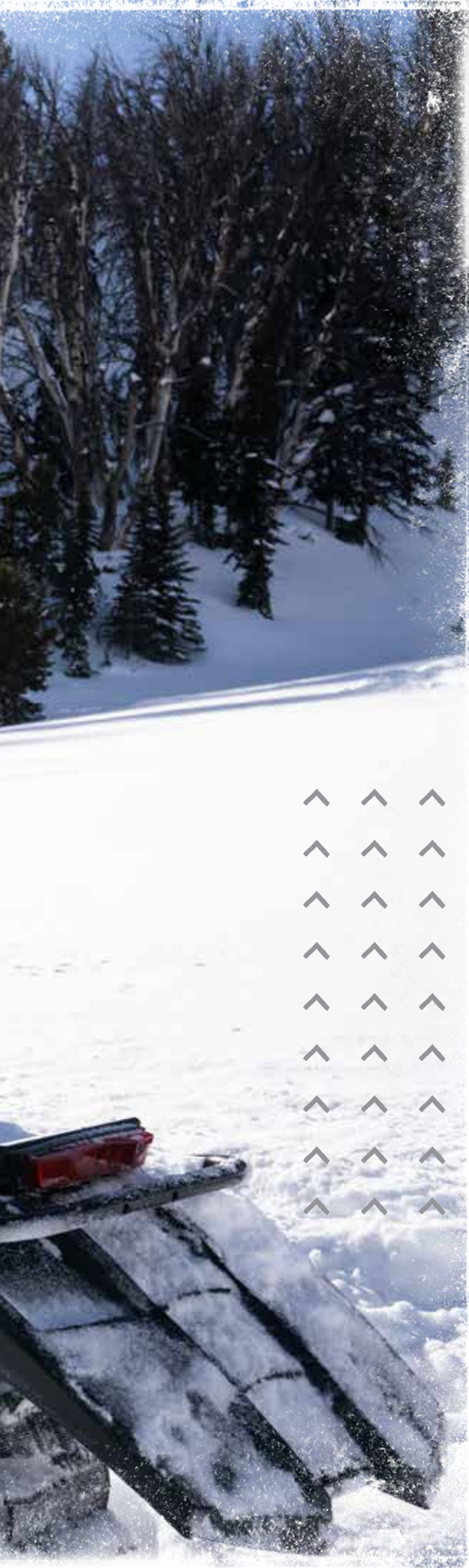
- Lightweight nylon cover is ideal for storage or overnight trips
- Secure-fitting elastic bottom cord
- Not recommended for trailering

7639-249 | '12-'22 F; ZR; THUNDERCAT; XF 129-137-IN.

BAGS



FEATURED ON SLED:
MOUNTAIN PACK / 8639-031
HANDLEBAR BAG / 8639-364



TRAIL PACK

- Durable and stylish bags provide easy-access storage for the long-distance touring rider
- Semi-rigid construction
- Includes cam-lock or strap-and-hook attachments
- Available in two sizes; Mid fits 129-in. and 137-in. models, Large fits 137-in. models
- Mid 27-liter, Large 33-liter, 8639-363 18.5-liter capacity

8639-029 MID | '13-'22 F, ZR; THUNDERCAT; 129-137-IN. **BEST SELLER**

8639-030 LARGE | '14-'22 ZR; THUNDERCAT 137-IN. **BEST SELLER**

8639-363 MID | '21-'22 BLAST ZR; M; LT; XR (ALL) 121-146-IN.



MOUNTAIN PACK

- These rugged, low-profile bags offer easy-access storage and provide quick access to your shovel
- Semi-rigid construction with interior zippered, mesh panels to keep your gear secure
- Cam-lock attachment with quarter-turn lock system eliminates straps and hooks
- Accepts all BCA shovels shown on page 61
- Available in two sizes for 141-in.-165-in. models
- Mid 17-liter, Large 28-liter capacity

NOTE: When using an avalanche airbag, avalanche experts recommend carrying a shovel in the backpack and a second shovel on the sled. This allows you to keep your avalanche airbag on in case of a secondary avalanche.

8639-031 MID | '12-'22 M (ALL); RIOT (ALL); BLAST M; XF HIGH COUNTRY; KING CAT 141-165-IN. **BEST SELLER**

8639-032 LARGE | '12-'22 M (ALL); RIOT (ALL); BLAST M; XF HIGH COUNTRY; KING CAT 141-165-IN.

8639-034



8639-033



TUNNEL PACK

- Large capacity bags provide convenient, economical storage
- Strap-and-hook attachment fits most flat-tunnel models
- Available in two sizes; Mid fits 129-in. and 137-in. models, Large fits 137-in. models
- Mid 20-liter, Large 30-liter capacity

8639-033 MID | '13-'22 F, ZR; THUNDERCAT; RIOT (ALL) 129-146-IN.

8639-034 LARGE | '14-'22 ZR; THUNDERCAT; RIOT (ALL) 137-146-IN.



TUNNEL GEAR BAG

- Large storage capacity
- Built-in cinch straps keep cargo secure
- Strap-and-hook attachment

6639-704 | '15-'20 LYNX; '12-'14 F5, F570; '07-'11 F; '09-'11 Z1



WINDSHIELD BAG

- Offers out-of-the-way storage for smaller items
- Fits neatly behind windshield

7639-691 | '18-'22 6/8000; '17-'22 9000; '14-'19 7000; '17-'19 3000 MODELS

7639-289 | '14-'17 4/5/6/8000; '14-'16 9000; '12-'13 F, M, XF 800/1100 MODELS



DASH CADDY

- Dash storage with sturdy polyethylene construction
Compartment door features a foam seal to keep contents safe and dry
- Not compatible with Mid Performance windshield

8639-219 | '18-'22 6/8000; '17-'22 9000; '14-'19 7000; '17-'19 3000 MODELS



HANDLEBAR BAG

- Easy-access storage
- Convenient hook-and-loop attachment

8639-185 | '07-'22 MODELS W/ TRAIL HANDLEBAR

8639-186 | '05-'22 MODELS W/ MOUNTAIN HANDLEBAR

8639-364 | '21-'22 BLAST ZR, M, LT; '22 XR (ALL)



CUSTOM HANDLEBAR BAG

- Lightweight storage for any sled

6639-716 | UNIVERSAL

8639-186



HEATED GOGGLE BAG

- Engine heat dries goggles, masks or gloves while you ride
NOTE: Do not leave goggles in holder for extended periods; heat may damage goggles.

8639-366 | '21-'22 BLAST ZR, M, LT; '22 XR (ALL)

7639-591 | '18-'22 6/8000; '17-'22 9000 MODELS

5639-767 | '14-'17 4/5/6/8000; '14-'19 3/7000; '14-'16 9000; '12-'13 F, M, XF 800/100 MODELS



CARGO BAG

- Large main storage area
- Quick-attach mounting straps

7639-764 | '18-'22 NORSEMAN; '16-'17 BEARCAT 3000 LT 146-154-IN.



XC MUFFS

- Water- and wind-resistant nylon outer with a quilted lining
- Rolls up on handlebar when not in use
- Easy-attach hook-and-loop straps with elastic grip straps

7639-995 | UNIVERSAL



TOURING MUFFS

- Water- and wind-resistant nylon outer with a semi-rigid design
- Clear insert for visibility of controls
- Folds flat for storage
- Easy-attach hook-and-loop straps with elastic grip straps

8639-175 | UNIVERSAL

TOURING

COMFORT AND STYLE FOR TAKING
YOU AND YOUR PASSENGER FURTHER.



TOURING FEATURED ACCESSORIES



HEAVY DUTY BUMPER

Provides extra protection while giving your Cat extra style.

P. 23 | 6639-809



HEATED GOGGLE BAG

There's nothing worse than wet goggles, so we created a heated goggle bag that allows your goggles to stay warm and dry.

P. 19 | 5639-767



HIGH WINDSHIELD

Our high windshield provides the best protection from snow and wind.

P. 23 | 1616-089



PASSENGER SEAT

Provide extra comfort when you convert your sled for a passenger.

P. 22 | 8639-410



HEAVY-DUTY SUSPENSION SPRINGS

- Heavier rear suspension springs for a firmer ride
- Includes LH and RH torsion springs

8639-417 | '21-'22 BLAST ZR **NEW**



PASSENGER SEAT

- Easily converts your sled to carry a passenger
- Includes passenger seat with backrest, handholds, tunnel mounts and footrests
- All models require Overload Kit (page 24)

8639-410 | '21-'22 BLAST LT, '22 XR **NEW**

7639-826 | '18-'22 NORSEMAN (ALL); '16-'17 BEARCAT LT 3000 **BEST SELLER**



PASSENGER HAND WARMERS

- Adds hand warmers for Passenger Seat kits
- Includes wiring harness with disconnect coupler and passenger control switch

8639-212 | FITS PASSENGER SEAT 8639-217; 8639-410 **NEW**

6639-281 | FITS PASSENGER SEAT 7639-826



6639-541

TOW HITCH

- Quick and easy installation
- Mounts to standard bumper
- For light-duty use

8639-416 | '21-'22 BLAST ZR, M, LT; '22 XR (ALL); '15-'19 PANTERA; '16-'18 XF CROSSTOUR 6/7/9000 **NEW**

6639-541 | '12-'22 M, RIOT, ZR, THUNDERCAT, XF, F

5639-324 | '15-'20 LYNX; '12-'14 F5, F570; '09-'11 CF, CFR, M; '10-'11 F, Z1



PASSENGER SEAT

- Easily converts your sled to carry a passenger
- Includes passenger seat with backrest, handholds, tunnel mounts and footrests
- Convenient, quick-attach mounting system provides an easy conversion from single-seat to a 2-up passenger seat

NOTE: Models with mountain-style seat require a ZR Trail Seat.

8639-217 | '13-'22 ZR; THUNDERCAT; XF; F 129-137-IN. **BEST SELLER**



TETHER SWITCH

- Stops engine in the event you fall off your sled
- Attaches to your jacket D-ring

8639-074 | '18 ZR, M, XF, NORSEMAN 6/8000; '17 ZR 6000 RS **BEST SELLER**

8639-075 | '18 ZR, M, XF 9000

5639-859 | '14-'17 6/8000; '12-'13 800

5639-860 | '14-'17 5/9000; '14-'18 7000; '16-'18 3000; '12-'13 1100/1100T



7639-361

PASSENGER GAUNTLETS

- Water- and wind-resistant nylon outer
- Easy-attach hook-and-loop straps
- Mounts with or without standard wind deflectors

8639-177 | FITS PASSENGER SEAT 8639-217

7639-361 | '15-'19 PANTERA; '15-'20 LYNX LT; '15-'18 BEARCAT LT 2000; '08-'14 T570, TZ1; '09-'14 BEARCAT 570



PASSENGER SEAT

- Passenger seat with backrest, handholds and footrests
- Includes seat assembly and tunnel-mounted storage box

7639-833 | '18-'19 BEARCAT 7000 XT



HEAVY-DUTY BUMPER

- Heavy-duty tubular steel construction
- Provides frontal protection from obstacles and rough terrain

6639-890 | '16-'19 BEARCAT, PANTERA 7000 XT

SPEEDRACK® II SYSTEM

- A simple, fast and strong accessory attachment system with accessories that can be added or removed in seconds
- Attach in two easy steps:
 1. Position the accessory,
 2. Insert SpeedLock™ and press down thumb lock



SPEEDRACK BASE KIT

- SpeedRack Base attaches to the tunnel to provide the mount for SpeedRack accessories
- Includes front and rear SpeedRack base mounts and one SpeedLock

7639-342 | '12-'22 ZR (ALL); THUNDERCAT; M (ALL); BLAST ZR, M, XR; KING CAT; F; XF (EXCEPT '17-'19 CROSS COUNTRY)



SPEEDRACK GEAR BAG

- Compact storage bag attaches to SpeedRack Base
- Required SpeedLock is included in SpeedRack Base Kit
- 20-liter capacity

8639-178 | WORKS WITH SPEEDRACK BASE KIT



SPEEDLOCK

- Drop-in system quickly attaches with easy-to-use thumb locks
- Durable cast-aluminum components with one-click unlocking for fast removal

2436-501 | WORKS WITH SPEEDRACK BASE KIT



SPEEDRACK CARGO BOX

- Durable molded polyethylene construction
- Removable lid with foam seal
- Built-in cinch strap keeps cargo secure
- Attaches to SpeedRack Base
- Required SpeedLock is included in SpeedRack Base Kit
- 20 in. L x 12 in. W x 10 in. H, 25-liter capacity

7639-351 | WORKS WITH SPEEDRACK BASE KIT



SPEEDLOCK COVER

- Slip-on rubber cover retains mechanical mobility of SpeedLock in wet, slushy conditions

2436-540 | WORKS WITH SPEEDRACK BASE KIT



OVERLOAD KITS

- Added spring tension to support 2-up riding.
- Increased tow load pull and carry.
- Quick engagement/disengagement

8639-378 | '21-'22 BLAST LT

7639-978 | '19-'22 NORSEMAN; '16-'18 XF CROSSTOUR; '16-'17 BEARCAT 3000; '14-'16 BEARCAT XTE



EXPEDITION FUEL RACK

- Rack system provides convenient fuel and gear storage
- Includes tunnel rack, pack mount and 1.75-gallon fuel pack

8639-215 | '12-'22 ZR; THUNDERCAT; M, KING CAT; BLAST ZR, M, XR; F; XF (EXCEPT '17-'19 CROSS COUNTRY)



HEATED SHIELD ADAPTER

- Quickly adapts a heated shield cord to the sled's accessory outlet

5639-645 | UNIVERSAL



HEATED SHIELD OUTLET

- Dash-mounted outlet for heated shield

7639-041 | '14-'22 ZR, M, NORSEMAN; '21-'22 BLAST ZR, M, LT, XR; '12-'19 XF; '12-'13 F



HITCH KITS

- Strong, secure steel bumper available with a pivot or pintle hitch
- 129-in.-153-in. kits include 8 mounting pockets
- Maximum tow rating 20 lbs. for vertical load, 150 lbs. for drawbar (pull)

7639-356 PIVOT | '18-'22 6/8000, '19 7000, '17-'22 9000 137-IN.

7639-357 PINTLE | '18-'22 6/8000, '19 7000, '17-'22 9000 137-IN.

6639-991 PIVOT | '21-'22 RIOT X; '16-'19 XF HIGH COUNTRY, M 141-IN.; '16-'17 5/6/8000, '16 9000, '16-'18 7000 XF CROSSTREK, ZR 137-IN.; '13-'15 XF 137-141-IN.

6639-911 PINTLE | '21-'22 RIOT X; '16-'19 XF HIGH COUNTRY, M 141-IN.; '16-'17 5/6/8000, '16 9000, '16-'18 7000 XF CROSSTREK, ZR 137-IN.; '13-'15 XF 137-141-IN.

6639-992 PIVOT | '12-'22 M 153-154-IN.; '20-'22 RIOT; '20 RIOT X; '17-'19 XF HIGH COUNTRY 153-IN.; '13-'15 XF HIGH COUNTRY

6639-912 PINTLE | '12-'22 M 153-154-IN.; '20-'22 RIOT; '20 RIOT X; '17-'19 XF HIGH COUNTRY 153-IN.; '13-'15 XF HIGH COUNTRY

4639-723 PIVOT | '15-'20 LYNX LT; '15-'18 BEARCAT LT 2000; '08-'14 T570, TZ1; '09-'14 BEARCAT 570

6639-740 PINTLE | '18-'22 NORSEMAN; '15-'19 PANTERA; '16-'18 XF CROSSTOUR



LED HEADLIGHT

- Delivers significantly greater performance than a halogen system
- When the high beam is activated, the low beam also stays on to deliver a light pattern with great range and width
- Features stylish accent lighting
- Includes headlight assembly and wiring harness
- Fits '18-'22 Gen 2 models with halogen headlight

7639-989 | '20-'22 RIOT, NORSEMAN 6/8000; '20 M, RIOT X; '19-'20 ZR 6/8000; '19 XF HIGH COUNTRY

0709-096 | '18 ZR, M, XF, NORSEMAN, PANTERA 6/8000



HEATED SEAT KITS

- Provides rider warmth and comfort
- Includes heating element and wiring
- 6/8000 models require LED headlight

7639-968 | '18-'22 ZR 6/8000; '20-'22 RIOT, RIOT X 8000; '18-'19 XF CROSS COUNTRY, HIGH COUNTRY 6/8000 MODELS W/ LED HEADLIGHT

7639-965 | '18-'19 ZR 3/7000; '18-'19 XF HIGH COUNTRY 9000



ELECTRIC START KITS

- Crank up your machine effortlessly
- Includes starter components, ring gear, wiring harness, hardware, and battery

NOTE: M 8000 models require larger ES fuel tank and seat

8639-133 | '19-'22 8000 MODELS (EXCEPT M)

7639-846 | '18 8000 MODELS (EXCEPT M)

7639-126 | '14-'17 8000 (EXCEPT M); '12-'13 F, XF, M 800

7639-501 | '14-'17 ZR 6000; '15-'17 M, XF HIGH COUNTRY 6000

7639-500 | '15-'16 BEARCAT 2000; '14 BEARCAT 570

WINDSCREENS



FEATURED ON SLED:
PRO MTN BUMPER (BLACK) / 8639-197
TEAM ARCTIC HAND GUARDS / 8639-345
MID PERFORMANCE WINDSHIELD (12") / 7639-700



FIND THE PERFECT ONE TO MATCH YOUR STYLE OF RIDING.

TOURING AND LONG DISTANCE RIDERS:
a tall snowmobile windshield with hand guards will be perfect to keep you warm and protected from the wind.

PERFORMANCE RIDERS:
a low windshield is right for you. The low cut will be more aerodynamic and if you roll your sled, there is less of a chance that it will get caught and break.



7639-383

HIGH TOURING

- 7639-383, 7639-371 8-in. High / 28-in. Wide, Accepts Mirrors 6639-630, 6639-770
- 1616-089 16-in. High / 24-in. Wide, Does Not Accept Mirrors

7639-383 BLACK | '18-'22 6/8000; '17-'22 9000; '14-'19 7000; '17-'19 3000 **BEST SELLER**

7639-371 BLACK | '14-'17 4/5/6/8000; '14-'16 9000; '12-'13 800/1100

1616-089 TINT | '21-'22 BLAST ZR, M, LT, XR



8639-077

MID TOURING

- 15-in. High / 27-in. Wide
- Accepts Mirrors 6639-630, 6639-770

7639-688 BLACK | '18-'22 6/8000; '17-'22 9000; '14-'19 7000; '17-'19 3000 **BEST SELLER**

7639-368 BLACK | '14-'17 4/5/6/8000; '14-'16 9000; '12-'13 800/1100 **BEST SELLER**

8639-077 MEDIUM GREEN | (SAME APPLICATION AS 7639-688)

8639-222 HYPER GREEN | (SAME APPLICATION AS 7639-688)



EXTREME LOW

- 2.5-in. High / 16-in. Wide
- Accepts Hand Guards

7639-692 BLACK | '18-'22 6/8000; '17-'22 9000; '14-'19 7000; '17-'19 3000 MODELS



LOW SNO PRO®

- 5-in. High / 20-in. Wide
- Accepts Hand Guards

7639-696 BLACK | '18-'22 6/8000; '17-'22 9000; '14-'19 7000; '17-'19 3000 MODELS



MID PERFORMANCE

- 12-in. High / 21-in. Wide
- Accepts Hand Guards

7639-700 BLACK | '18-'22 6/8000; '17-'22 9000; '14-'19 7000; '17-'19 3000 MODELS

7639-701 MEDIUM GREEN | (SAME APPLICATION AS 7639-700)

8639-220 HYPER GREEN | (SAME APPLICATION AS 7639-700)

8639-221 ELECTRIC BLUE | (SAME APPLICATION AS 7639-700)



8639-134



8639-135

MID LXR

- 13-in. High / 27-in. Wide
- Accepts Mirrors 6639-902

NOTE: When using Hand Guards, the handlebar riser must be adjusted to provide clearance between the guards and the windscreen.

8639-134 BLACK | '18-'22 6/8000; '17-'22 9000; '14-'19 7000; '17-'19 3000

8639-135 MEDIUM GREEN | (SAME APPLICATION AS 8639-134)



CUSTOMIZE



FEATURED ON SLEDS:
PRO MTN BUMPER (BLACK) / 8639-197
MOUNTAIN PACK / 8639-031
HANDLEBAR BAG / 8639-186



HOOD-MOUNTED MIRRORS

- Mounts to the hood panel
- Adjustable shaft for optimum view
- Works with all production or accessory windshields
- Sold in pairs

8639-276 BLACK | '18-'22 6/8000; '17-'22 9000; '21-'22 4000; '19 3/7000 **NEW**

5639-832 BLACK | '14-'17 4/5/6/8000; '14-'18 3/7000; '14-'16 9000; '12-'13 800/1100



FLEX-TEC GUARDS

- Handles the toughest conditions while keeping your hands warm and protected
- Flexible backbone design
- Models with mountain handlebars require trimming
- Sold in pairs; includes machined aluminum mounts
- See windscreen applications on pages 29-30 for compatibility

7639-394 BLACK | '14-'22 ZR, THUNDERCAT; '20-'22 RIOT; '21-'22 BLAST ZR, M, LT, XR; '13-'17 XF; '12-'13 F **BEST SELLER**

7639-886 MED GREEN | (Same application as 7639-394)

8639-225 BLUE | (Same application as 7639-394)



PRO BUMPER

- Aluminum bumper provides added protection
- Durable factory-matched powder-coat finish
- 4.5 lbs.

8639-400 BLACK GLOSS | '18-'22 6/8000; '21-'22 4000; '19 3/7000 **BEST SELLER**

8639-401 MED GREEN | (Same application as 8639-400)

8639-402 HYPER GREEN | (Same application as 8639-400)

7639-301 BLACK GLOSS | '17-'22 9000

6639-724 BLACK GLOSS | '14-'17 4/5/6/8000; '14-'18 3/7000; '14-'16 9000; '12-13 800/1100



PERFORMANCE WEAR STRIPS

- Wear Strips feature DuPont™ Vespel® inserts for greater durability
- Inserts are placed at a 45° angle across the strip for constant contact and even wear
- Wide-profile Wear Strips keep the track running true for increased performance
- Sold individually

6639-448 | 121-IN.-141-IN. MODELS **BEST SELLER**

6639-864 | 146-IN.-162-IN. TWIN RAIL MODELS



TEAM ARCTIC HAND GUARDS

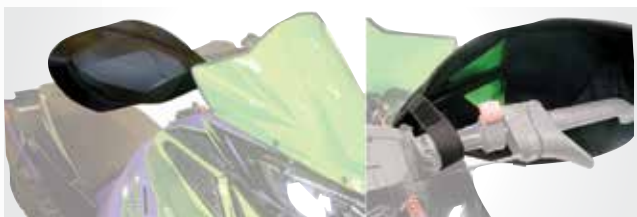
- Lightweight, injection-molded plastic guards add warmth and protection
- Models with mountain handlebars require trimming
- Sold in pairs, includes nylon mounting arms
- See windscreen applications on pages 29-30 for compatibility

8639-345 BLACK | '14-'22 ZR, THUNDERCAT; '20-'22 RIOT; '21-'22 BLAST ZR, M, LT, XR; '13-'17 XF; '12-'13 F

8639-346 MEDIUM GREEN | (Same application as 8639-345)

8639-347 ORANGE | (Same application as 8639-345)

8639-348 WHITE | (Same application as 8639-345)



HAND GUARD EXTENSIONS

- Quick-attach guards add warmth and protection
- Fits Team Arctic Hand Guards
- Sold in pairs

8639-176 | FITS TEAM ARCTIC HAND GUARDS

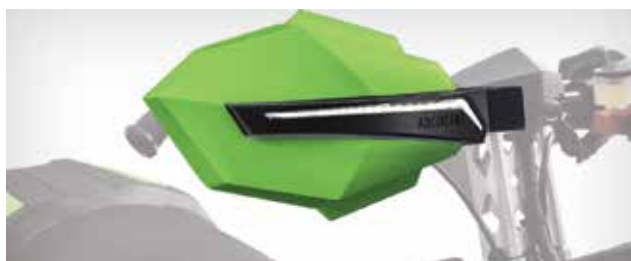


PROCROSS™ HAND GUARDS

- Stylish, injection-molded guards add style and protection
- Models with mountain handlebars require trimming
- Sold in pairs, includes nylon mounting arms
- See windscreen applications on pages 29-30 for compatibility

8639-352 BLACK | '14-'22 ZR, THUNDERCAT; '20-'22 RIOT; '21-'22 BLAST ZR, M, LT, XR; '13-'17 XF; '12-'13 F

8639-353 MED GREEN | (Same application as 8639-352)



PROCROSS HAND GUARDS - LIGHTED

- Stylish, injection-molded guards with LED accent lighting
- Lighted guards include LED caps and wiring
- Models with mountain handlebars require trimming
- Sold in pairs, includes nylon mounting arms
- See windscreen applications on pages 29-30 for compatibility

8639-354 BLACK | '14-'22 ZR, THUNDERCAT; '20-'22 RIOT; '21-'22 BLAST ZR, M, LT, XR; '13-'17 XF; '12-'13 F

8639-355 MED GREEN | (Same application as 8639-354)



HAND GUARD LIGHT KIT

- Adds LED accent lighting to standard ProCross Hand Guards
- Includes LED caps and wiring
- Sold in pairs

8639-356 | (Same application as 8639-354)



BAR RISERS

- Strong extruded aluminum
- Black powder-coat finish

NOTE: Due to control cable and brake line restrictions, 7.5-in. and 8.5-in. risers are recommended for M models only.

8639-337 2.0-IN. | '12-'22 MODELS W/ FIXED STEERING POST

8639-338 3.5-IN. | (SAME APPLICATION AS 8639-337)

8639-339 4.5-IN. | (SAME APPLICATION AS 8639-337)

8639-340 5.5-IN. | (SAME APPLICATION AS 8639-337)

8639-341 6.5-IN. | (SAME APPLICATION AS 8639-337)

8639-342 7.5-IN. | (SAME APPLICATION AS 8639-337)

8639-343 8.5-IN. | (SAME APPLICATION AS 8639-337)



RUFFIAN GRIPS

- Soft compound grips offer better shock absorption
- Includes two 8-in. grips, cut to length

5639-655 | UNIVERSAL



PROCCROSS GRIPS

- Slim, comfortable design
- Includes two 6.2-in. grips

7639-398 | UNIVERSAL

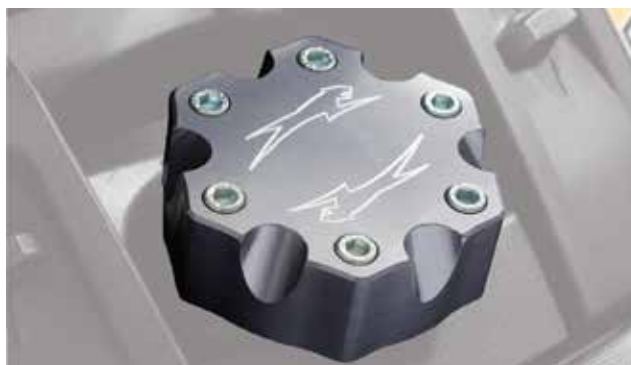


PRO MTN CAP

- Lightweight, stylish billet aluminum

7639-844 BLACK 2.0-IN. | UNIVERSAL '12-'22

8639-049 PURPLE 3.5-IN. | (SAME APPLICATION AS 7639-844)



PROCCROSS CAP

- Billet aluminum for a custom look

7639-405 BLACK | UNIVERSAL '12-'22



BILLET BRAKE LEVER

- Comfortable, custom design with an anodized finish
- Accepts production park brake lock

8639-051 BLACK | UNIVERSAL '19-'22

8639-052 GRAY | (Same application as 8639-051)

8639-053 PURPLE | (Same application as 8639-051)



SNO PRO® BRAKE LEVER

- Aluminum lever with a curved tip design
- Accepts production park brake lock

8639-099 | UNIVERSAL '19-'22

2602-770 | UNIVERSAL '12-'18



PRO MTN BUMPER

- Lightweight aluminum bumper with a stylish, aggressive design
- Open design minimizes snow buildup
- Durable factory-matched powder-coat finish
- 3 lbs.

8639-197 BLACK GLOSS | '18-'22 6/8000; '19 3/7000

8639-189 MED GREEN | (Same application as 8639-197)

8639-190 HYPER GREEN | (Same application as 8639-197)

8639-192 ORANGE | (Same application as 8639-197)

8639-196 RED | (Same application as 8639-197)

7639-308 BLACK GLOSS | '14-'17 4/5/6/8000; '14-'18 3/7000; '14-'16 9000; '12-13 800/1100



PROCLIMB™ BUMPER

- Large-diameter top tube provides added protection
- Open-tube design lets snow drop through
- Durable factory-matched powder-coat finish
- 3.5 lbs

8639-405 BLACK GLOSS | '18-'22 6/8000; '21-'22 4000; '19 3/7000

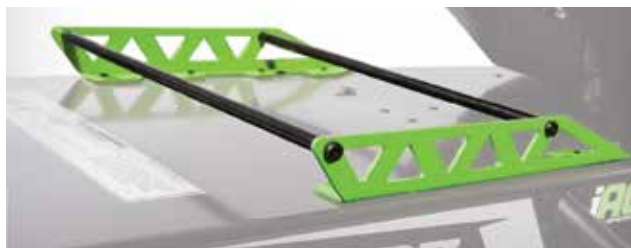
8639-390 BLACK TEX | (Same application as 8639-405)

8639-406 MED GREEN | (Same application as 8639-405)

8639-407 HYPER GREEN | (Same application as 8639-405)

8639-409 RED | (Same application as 8639-405)

6639-286 BLACK GLOSS | '14-'17 4/5/6/8000; '14-'18 3/7000; '14-'16 9000; '12-13 800/1100



TUNNEL RACK

- Stylish, lightweight, powder-coated aluminum
- Fits 2.5-gallon fuel can
- Recommend the use of a Tunnel Reinforcement Kit when carrying fuel or heavy loads on '14-'22 M models See Page 55
- 8 in. x 14 in.

8639-059 BLACK GLOSS | '14-'22 ZR, THUNDERCAT 137-IN.; '12-'22 M; '21 BLAST ZR, M, XR; '12-'19 XF HIGH COUNTRY; '13-'16 XF

8639-060 MED GREEN | (Same application as 8639-059)

8639-236 HYPER GREEN | (Same application as 8639-059)

8639-062 ORANGE | (Same application as 8639-059)



TUNNEL PAD

- Protects the top of the tunnel when carrying fuel
- Adhesive attachment

7639-997 | '14-'22 ZR, THUNDERCAT 137-IN.; '12-'22 M; '21 BLAST ZR, M, XR; '12-'19 XF HIGH COUNTRY; '13-'16 XF



RACK STRAP

- Strong, heavy-duty nylon straps
- Quick-release buckle
- Easily secure gear and fuel cans

7639-463 | UNIVERSAL



2.5-GALLON FUEL CAN

- Lightweight polyethylene plastic helps prevent fuel permeation
- Includes spout with automatic shut-off and overflow protection
- Meets or exceeds current U.S. and Canadian standards

1436-952 | UNIVERSAL



TANK PADS

- Provides comfort and grip
- Sold in pairs

7639-417 BLACK | '18-'22 ZR 6/8000; '20-'22 RIOT; '20 RIOT X; '18-'22 NORSEMAN, '18-'19 PANTERA, XF 6/8000; '19 ZR, NORSEMAN, PANTERA 3/7000; '17-'22 ZR, THUNDERCAT, XF, M 9000

7639-774 BLACK | '18-'22 M 6/8000; '21-'22 RIOT X; '21-'22 BLAST ZR, M, LT, XR

7639-413 BLACK | '14-'17 4/5/6/8000; '14-'18 3/7000; '14-'16 9000; '12-'13 800/1100



PROCROSS SKIS

- 6-in. ski kit (pair)
- Includes 4-in. carbide wearbars

6639-206 BLACK | '12-'22 UNIVERSAL



G2 PROCLIMB SKIS

- 7-in. ski kit (pair)
- Includes 4-in. carbide wearbars

8639-064 BLACK | '12-'22 UNIVERSAL

8639-241 HYPER GREEN | (SAME APPLICATION AS 8639-064)



PROUTE-10/8 SKIS

- 8-in. center width with 10-in. tip (pair)
- Includes 4-in. carbide wearbars

7639-032 BLACK | '12-'22 UNIVERSAL



SLP SKIS

- Exceptional float and control in deep, loose snow
- Includes handles, saddles and mounting hardware
- Black 7-in. ski kits are sold in pairs; wearbars sold separately

7639-095 POWDER PRO | '12-'22 UNIVERSAL

7639-093 MOHAWK | (Same application as 7639-095)

SLP SKIS

- Sold in pairs

3639-420 4-IN. CARBIDE | (Same application as 7639-095)

3639-421 6-IN. CARBIDE | (Same application as 7639-095)



ARCTIC CAT SKI HANDLES

- Fits Arctic Cat Saddleless Skis
- Sold in pairs

7639-820 MED GREEN | '12-'22 UNIVERSAL

8639-243 HYPER GREEN | (Same application as 7639-820)

6639-388 TA GREEN | (Same application as 7639-820)

5639-744 ORANGE | (Same application as 7639-820)

6639-095 WHITE | (Same application as 7639-820)



SKID PLATES

- Provides impact protection from A-arms to heat exchange
- Heavy-duty polyethylene protects vital components
- NOTE: Some models require trimming around exhaust outlet.

7639-676 BLACK | '18-'22 ZR, NORSEMAN 6/8000; '20-'22 RIOT 6/8000; '20 RIOT X 8000; '18-'19 XF, PANTERA 6/8000; '19 ZR, NORSEMAN, PANTERA 3/7000

8639-065 MED GREEN | (Same application as 7639-676)

8639-231 HYPER GREEN | (Same application as 7639-676)

7639-421 BLACK | '17-'22 9000 (EXCEPT M, KING CAT)

7639-680 BLACK | '18-'22 M 6/8000; '21-'22 RIOT X

8639-066 MED GREEN | (Same application as 7639-680)

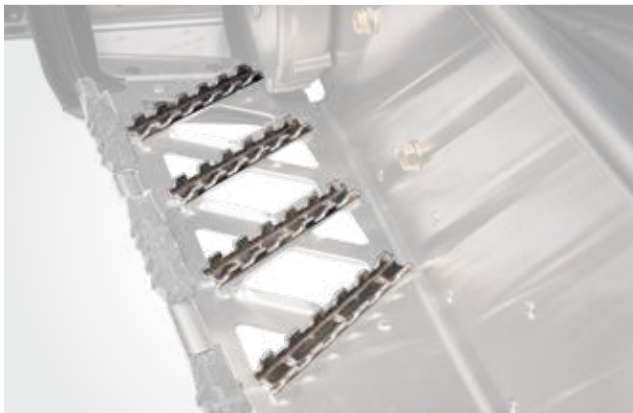
8639-232 HYPER GREEN | (Same application as 7639-680)

8639-389 BLACK | '21-'22 BLAST ZR, M, LT, XR

7639-684 BLACK | '17-'19 M, KING CAT 9000

7639-425 BLACK | 17 MOUNTAIN CAT 8000

7639-720 BLACK | '14-'17 ZR 4/5/6/8000; '13-'17 M, XF 6/8000; '14-'16 ZR, M, XF 9000; '13 F 800/1100



RUNNING BOARD TRACTION

- Aluminum running board grippers provide added boot traction
- Includes eight grips with rivets

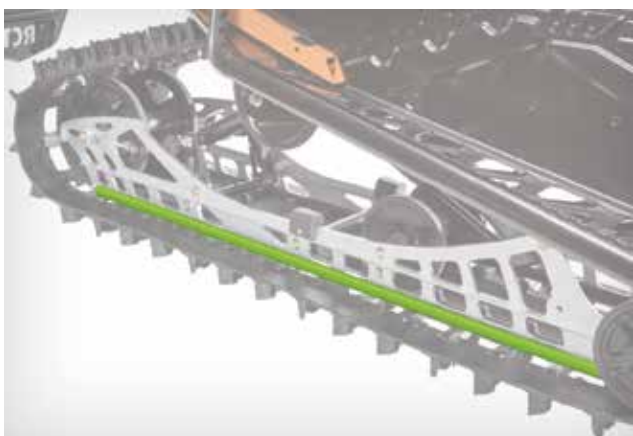
8639-391 | UNIVERSAL



TUNNEL FLARES

- Deflects snow spray away from the rider
- Sold in pairs

7639-969 BLACK | '14-'22 ZR; '20-'22 RIOT, RIOT X; '12-'22 M; '12-'19 XF; '13 F



WEAR STRIPS

- Sold individually
- Add a dash of color to your slide rails

4604-402 MED GREEN | 121-IN.-129-IN. MODELS

4604-403 ORANGE |

4604-404 MED GREEN | 137-IN. MODELS

4604-405 ORANGE |

4604-406 MED GREEN | 141-IN.-153-IN. TWIN RAIL MODELS

4604-407 ORANGE |

4604-408 MED GREEN | 162-IN. TWIN RAIL MODELS

4604-409 ORANGE |



WIND DEFLECTORS

- Lightweight, stylish deflectors add wind protection
- Sold as a pair, with right and left deflectors

7639-816 BLACK | '18-'22 ZR 6/8000; '20-'22 RIOT; '20 RIOT X; '17-'22 ZR, THUNDERCAT, XF, KING CAT, M 9000; '18-'22 NORSEMAN, '18-'19 PANTERA, XF 6/8000; '19 ZR, NORSEMAN, PANTERA 3/7000

6639-453 BLACK | '14-'17 4/5/6/8000; '14-'18 3/7000; '14-'16 9000; '12-13 800/1100



SNOWFLAP

6639-398 TEAM ARCTIC GREEN | '12-'22 M; '20-'22 RIOT, RIOT X; '14-'22 ZR; '12-'19 XF; '12-'13 F

5639-843 ORANGE | '12-'22 M; '20-'22 RIOT, RIOT X; '14-'22 ZR; '12-'19 XF; '12-'13 F



WINDSHIELD MIRRORS

- Mounts to the outside of the windshield
- 6639-630, 6639-770 fit accessory Mid Touring and High Touring windshields shown on page 23
- 6639-902 fits '12-'21 LXR-style windshields
- Sold in pairs

6639-630 PAIR | '12-'22 MID TOURING & HIGH TOURING WINDSHIELDS

6639-770 PAIR | '12-'22 MID TOURING & HIGH TOURING WINDSHIELDS

6639-902 PAIR | '12-'22 MID LXR WINDSHIELDS



COMPACT MIRROR

- Mounts to the inside of the windshield
- Sold individually

4639-565 | '15-'20 LYNX; '15-'18 BEARCAT 2000; '12-'14 F5, F570; '07-'11 F; '08-'14 T570, BEARCAT 570; '09-'11 Z1



HAND MIRROR

- Easy on/off with hook-and-loop strap

4992-810 | UNIVERSAL

DEMERBOX

BUILT TO LAST

The partnership you didn't know you needed.

The DemerBox is ruggedly built to adapt to varying climates and terrain. With extra storage to house the essentials (snack, gloves, goggles), to a built in waterproof speaker that ensures every riding experience is a BLAST, and lastly a USB charger that lasts up to 40 hours; the DemerBox will not disappoint.



Size: 10.62" x 9.68" x 6.87" (27 x 25 x 18 cm); Weight: 5.44 lbs (3.37 kg)
PN: 10007284



Each DemerBox includes an AC charger, 3.5mm aux cable and Port Plug. DemerBox lasts an incredible 40 hours between charges. Plus, it has internal USB charging to keep your devices juiced up for your entire adventure!

A Crushproof Powerhouse: Built in a crushproof Pelican case.

Weather proof: Includes a Port Plug that installs quickly to become fully waterproof. Never worry about rain at your backyard party or the speaker falling overboard again! Keep valuable items like your wallet, keys and phone safe and dry inside the case.

Pair with up to 6 other DemerBoxes!

Package quantities, specifications and materials may change without notice. For a dealer near you, visit arcticcat.com.



YOUTH



FEATURED ON SLED:
HIGH WINDSHIELD / 7639-838
HAND GUARDS / 8639-213



COVER

- Custom-fit cover made from durable canvas
- Accepts low or high windshield
- Trailerable

8639-011 | '18-'22 ZR 200 **BEST SELLER**

8639-012 | '18-'22 ZR 120



HEAVY-DUTY SUSPENSION KIT

- Heavier suspension springs for larger riders
- 7639-887 includes ski shock and rear torsion springs
- 8639-208 includes rear torsion springs only

8639-208 | '21-'22 ZR 200

7639-887 | '18-'20 ZR 200 **BEST SELLER**



HIGH WINDSHIELD

- Adds warmth and protection
- 10 in. high

7639-838 | '18-'22 ZR 120, 200 **BEST SELLER**



HANDLEBAR BAG

- Convenient, easy-attach storage

7639-715 | '18-'22 ZR 200



TUNNEL PACK

- Compact gear storage
- Quick-attach fasteners
- 16 in. L x 10 in. W x 4 in. H

7639-994 | '18-'22 ZR 200



HAND GUARDS

- Provides added hand protection
- Includes injection-molded guards and flexible nylon mounting brackets
- Sold in pairs

8639-213 BLACK | '18-'22 ZR 200

8639-067 MED GREEN | (Same application as 8639-213)



FLEX-TEC GUARDS

- Adds style and warmth
- Flexible backbone design
- Sold in pairs; includes machined aluminum mounts

7639-911 MED GREEN | '18-'22 ZR 200

8639-245 RED | (Same application as 7639-911)



SNOCROSS HANDLEBAR KIT

- Wider than stock handlebar with an adjustable height riser
- Five-position riser adjusts up to 4-in. higher than the standard bar
- Includes heavy-duty steering post, 27-in. wide handlebar, hand warmer elements and grips
- 8639-266 converts steering to '20 specification and includes longer tie-rods

8639-267 | '20-'22 ZR 200

8639-266 | '18-'19 ZR 200



SPEEDWERX CLUTCH KITS

- Designed and calibrated for increased performance
- Includes springs, rollers and a custom helix

8639-121 | '18-'22 ZR 200 (Rider weight under 150 lbs)

8639-125 | '18-'22 ZR 200 (Rider weight over 150 lbs)



RUNNING BOARD GRIPS

- Traction grippers provide added boot grip
- Includes aluminum foot grips and nylon edge-roll grips

7639-728 | '18-'22 ZR 200



TETHER SWITCH

- Stops engine in the event that you fall off your sled
- Attaches to your jacket D-ring

7639-732 | '18 ZR 200



SPEEDOMETER KIT

- Track your speed, mileage and RPM
- Includes speedometer/tachometer, speed sensor and mounts

7639-927 | '18-'22 ZR 200



SKID WHEEL KIT

- Adds wheels to the rear skid for use in low snow conditions
- Not recommended for summer use
- Includes wheels and mounts

7639-963 | '18-'22 ZR 200

7639-967 | '18-'22 ZR 120



CARBIDE WEARBARS

- 4-in. carbide wearbars add steering control on hardpack snow and ice
- Sold in pairs

7639-889 4-IN. CARBIDE | '18-'22 ZR 120, 200

CROSSOVER

CARVES THE BACKCOUNTRY AND ZIPS
TRAILS WITH UNBRIDLED AGGRESSION



CROSSOVER FEATURED ACCESSORIES



TUNNEL PACK

The Tunnel Pack has large capacity to provide convenient, economical storage for everything you need on the trail, from food to tools to electronics.

P. 18 | 8639-033



PROCLIMB SKI

Use the ProClimb Ski to have exceptional float and control in deep, loose snow.

P. 38 | 8639-241



RUNNING BOARDS

Upgrade your sled with Running Boards add strength and reduce snow buildup.

P. 54 | 7639-437



PRO CLIMB BUMPER

Provides extra protection while giving your Cat extra style.

P. 27 | 8639-405

PERFORMANCE





REAR WHEEL KIT

- Outside idler wheels help keep track in proper alignment and distribute load evenly
- Recommended when adding studs to the models listed
- Includes wheels, spacer blocks and hardware
- Sold in pairs

6639-617 BLACK | '14-'18 ZR; '12-'13 F 129-IN. **BEST SELLER**

6639-621 BLACK | '16-'18 ZR 137-IN.; '17-'18 THUNDERCAT, XF CROSS COUNTRY 137-IN.; '16-'19 M, XF HIGH COUNTRY 141-IN.; '12-'18 M 153-162-IN. **BEST SELLER**

7639-882 MED GREEN | (SAME APPLICATION AS 6639-617)

6639-618 TA GREEN | (SAME APPLICATION AS 6639-617)

6639-619 ORANGE | (SAME APPLICATION AS 6639-617)

7639-883 MED GREEN | (SAME APPLICATION AS 6639-621)

6639-622 TA GREEN | (SAME APPLICATION AS 6639-621)

6639-623 ORANGE | (SAME APPLICATION AS 6639-621)



PANEL VENT KIT

- Side panel vents allow cool air into the clutches and exhaust
- Laser-cut aluminum grills with stainless steel mesh screens to keep the snow out
- Sold as a pair

7639-972 BLACK | '18-'22 ZR 6/8000; '20-'22 RIOT; '20 RIOT X; '18-'22 NORSEMAN, '18-'19 PANTERA, XF 6/8000; '19 ZR, NORSEMAN, PANTERA 3/7000; '17-'22 ZR, THUNDERCAT, XF, M 9000

7639-974 SILVER | '18-'22 M 6/8000; '21-'22 RIOT X; '21-'22 BLAST ZR, M, LT, XR



FOUR WHEEL KIT

- Replaces tri-hub rear axle wheels and adds outside wheels
- Helps keep track in proper alignment and spread the traction load evenly
- Includes wheels, machined aluminum spacers and hardware

7639-865 7.12-IN. WHEELS | '14-'18 ZR 129-IN.

7639-866 8-IN. WHEELS | '16-'18 ZR 137-IN.; '17-'18 THUNDERCAT, XF CROSS COUNTRY 137-IN.; '15 XF 137-IN.



WHEEL KITS

- Wheels provide increased performance in low snow conditions
- Includes two 5.63-in. wheels with mounts and hardware

6639-808 | '15-'18 ZR 129-IN.; '16-'18 ZR 137-IN.; '15 XF 137-IN.



SPEEDWERX HYPERSHIFT CLUTCH KITS

- Developed and trusted by Team Arctic racers
- Designed for the demands of the high-performance rider
- Provides smooth, hard-pulling acceleration with excellent back shifting and throttle response
- Some models may see improved top speed
- Kits vary by application, but most include adjustable machined weights, H5 alloy primary and secondary springs, and a custom-cut helix

8639-358 | '21 ZR 6000 0-5,000

8639-359 | '21 ZR 8000, 0-5,000 ALT

8639-248 | '20 ZR 6000 0-5,000

8639-249 | '20 ZR 8000, 0-5,000 ALT

8639-106 | '19 ZR 6000, 0-5,000 ALT

8639-107 | '19 ZR 8000, 0-5,000 ALT



DIGITAL PUMP

- Easily adjust FOX FLOAT® air pressure in the shop or on the trail
- Reads 0-300 psi

7639-121 |



FOX FLOAT 3 QSL

- Calibrated for mountain performance riding
- Quickly change between 2 specifically calibrated settings and a third position climb lockout function
- Infinitely adjustable air spring
- Fully rebuildable and revalveable

8639-325 | TRACK SHOCK (REAR ARM)

FOX FLOAT QS3

- Calibrated for mountain performance riding
- Quickly change between 3 specifically calibrated settings (soft, medium and firm) with the flip of a switch to adapt to varying conditions
- Infinitely adjustable air spring
- Fully rebuildable and revalveable

8639-312 | SKI SHOCKS



FOX® ZERO QS3

- Calibrated for aggressive trail riding and ditch banging
- Quickly change between 3 specifically calibrated settings (soft, medium and firm) with the flip of a switch to adapt to varying trail conditions
- Fully rebuildable and revalveable

8639-308 | SKI SHOCKS **BEST SELLER**

8639-319 | 8639-320 | 8639-323 | TRACK SHOCK (REAR ARM)



FOX ZERO QS3

- Calibrated for aggressive trail riding and ditch banging
- Quickly change between 3 specifically calibrated settings (soft, medium and firm) with the flip of a switch to adapt to varying trail conditions
- Adjustable rebound setting allows your shock to recover from bigger hits quickly enough to absorb consecutive hits and provides increased traction
- Fully rebuildable and revalveable
- Genuine Kashima Coat

8639-309 | SKI SHOCKS



ARCTIC CAT IFP

- Soft calibration for comfortable trail riding
- An affordable upgrade for models with hydraulic twin tube shocks
- Fully rebuildable and revalveable

8639-306 | 8639-307 | SKI SHOCKS

8639-317 | 8639-318 | ITRACK SHOCK (REAR ARM)

SKI SHOCKS (PAIR)				
SKI	ARCTIC CAT IFP 1.5	FOX 1.5 ZERO QS3	FOX 1.5 ZERO QS3R	FOX FLOAT QS3
'14-'22 ZR; '20-'22 RIOT; '15-'19 PANTERA; '14-'15 XF; '12-'13 F 42-IN.	8639-306	8639-308	8639-309	—
'14-'22 ZR; '20-'22 RIOT; '15-'19 PANTERA; '14-'15 XF; '12-'13 F 42-IN.	8639-307	8639-308	8639-309	—
'16-'22 M 36-IN.	—	—	—	8639-312

REAR ARM	ARCTIC CAT IFP 2.0	FOX 2.0 ZERO QS3	FOX FLOAT 3 QSL
'14-'19, '21 ZR 129-IN.	8639-317	8639-319	—
'14-'22 ZR; '17-'22 THUNDERCAT 137-IN.	8639-318	8639-320	—
'20-'22 RIOT; '20 RIOT X 146-IN.	—	8639-323	—
'16-'19 M 153-162-IN.	—	—	8639-325

KASHIMA COAT

Select shocks feature Genuine Kashima Coat. The distinctive gold color is backed by its high-performance properties that provide reduced friction, an exceptionally smooth feel and extreme durability.

QS3

(3 SETTING QUICK POSITION SWITCH)

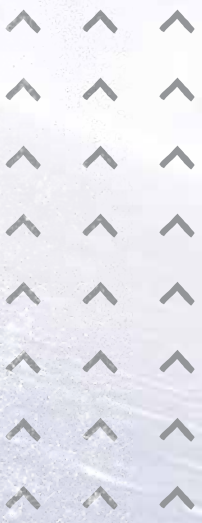
Choose from three specifically calibrated ride control settings to tune in your own personal ride and handling setting. The QS3 supplies a wide range of adjustments while simply allowing the user to make a change quickly without tools.

REBOUND DAMPING

Rebound damping controls the rate at which the shock returns after it has been compressed. The proper rebound setting is a personal preference and changes with rider weight, riding style and conditions.

MOUNTAIN

DEEP POWDER, STEEP CLIMBS AND
WHITE-KNUCKLE CARVING. THE AIR UP
HERE ISN'T FOR CASUAL RIDERS.



MOUNTAIN FEATURED ACCESSORIES



HANDLEBAR BAG

Keep those small essentials close by with our Handlebar bag.

P.18 | 8639-186



MOUNTAIN PACK

Our mountain pack gives easy access to extra storage and your shovel, while built rugged and compact to handle all weather and terrain.

P. 17 | 8639-031



PRO MTN BUMPER

Provides extra protection while giving your Cat extra style.

P. 36 | 8639-197



ASCENDER PRO SEAT

Customized and tailored specifically to improve comfort and function for our Mountain riders.

P. 55 | 8639-254



ALPHA CONVERSION KIT

- Includes a black skid frame assembly without shocks, 3.0" Power Claw track, and a 3.5 pitch track drive assembly.
- Can reuse existing shocks except '18-'19 Mountain Cat and M Hardcore models with QS3 front arm shock. (Does not fit)

8639-420 | '18-'19 M 8000; '17-'19 MOUNTAIN CAT; 162-IN. **BEST SELLER**

8639-080 | '18-'19 M 6/8000; '17-'19 MOUNTAIN CAT; 153-IN.



ICE SCRATCHERS

- Helps prevent wear strip overheating on ice and hardpack
- Use caution when operating sled in reverse
- Some models require the removal of forward idler wheels
- Sold in pairs

5639-897 | '21-'22 BLAST ZR, LT, XR; '12-'19 XF HIGH COUNTRY; '05-'15 M. **BEST SELLER**



ASCENDER RUNNING BOARDS

- Rugged, extruded aluminum boards add strength and reduce snow buildup
- Aggressive edge grip traction
- Installation requires removal of stock running boards
- Includes right-hand and left-hand boards
- 6.5 lbs.

7639-437 **BLACK** | '18-'21 M; '21-'22 RIOT X; '17-'19 MOUNTAIN CAT, KING CAT; 141-165-IN.

8639-078 **MED GREEN** | (SAME APPLICATION AS 7639-437)

8639-271 **HYPER GREEN** | (SAME APPLICATION AS 7639-437)



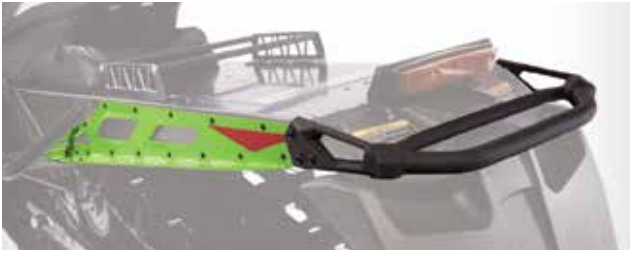
PRO MTN RUNNING BOARDS

- Aluminum running boards feature an open-tube design that reduces snow buildup
- Includes aggressive, injection-molded rail grippers
- 6.25-in. front stirrup width
- Front support tube allows a more forward foot position when sidehilling
- Installation requires removal of stock running boards
- Includes right-hand and left-hand boards and rail grippers
- Accepts Pro Mtn Rear Bumpers
- 8.5 lbs.

8639-070 **BLACK** | '12-'22 M; '20-'22 RIOT; '20 RIOT X; '12-'19 XF HIGH COUNTRY; '17-'19 KING CAT; 141-165-IN.

8639-071 **MED GREEN** | (SAME APPLICATION AS 8639-070)

8639-274 **HYPER GREEN** | (SAME APPLICATION AS 8639-070)



PRO MTN REAR BUMPER

- Rugged bumper features aluminum side plates and a tubular grab handle
- Embossed features add style and strength
- Durable powder-coat finish
- Accepts Pro Mtn Running Boards
- 146-154-in., 4.5 lbs.; 162-165-in., 5.2 lbs.

8639-085 BLACK GLOSS | '12-'22 M 153-154-IN.; '20-'22 RIOT; '20 RIOT X; '17-'19 XF HIGH COUNTRY 153-IN.; '12-'15 XF HIGH COUNTRY

8639-086 MED GREEN | (SAME APPLICATION AS 8639-085)

8639-279 HYPER GREEN | (SAME APPLICATION AS 8639-085)

8639-282 RED | (SAME APPLICATION AS 8639-085)

8639-091 BLACK GLOSS | '12-'22 M, KING CAT 162-165-IN.

8639-092 MED GREEN | (SAME APPLICATION AS 8639-091)

8639-286 HYPER GREEN | (SAME APPLICATION AS 8639-091)

8639-289 RED | (SAME APPLICATION AS 8639-091)



ASCENDER PRO SEAT

- Lightweight mountain seat provides improved comfort and function
- 1-in. narrower and 1-in. taller than the standard seat
- Added support at the rear of the seat for taller riders
- Includes black seat assembly and powder-coated aluminum seat frame
- Fits 6/8000 non-electric start models with a short tank and seat

8639-254 BLACK | '18-'22 M 6/8000 (NON-ES MODELS)

8639-255 MED GREEN |

8639-256 HYPER GREEN |



TUNNEL REINFORCEMENT KIT

- Recommended when carrying fuel or heavy loads.
- Includes RH & LH internal tunnel braces and hardware.
- Provides alignment holes for mounting Arctic Cat Tunnel Racks and Mountain Addiction Rails.

8639-210 | '14-'22 M 153-154-IN.; '20-'22 RIOT; '20 RIOT X; '17-'19 XF HIGH COUNTRY 153-IN.

8639-211 | '14-'22 M, KING CAT 162-165-IN.



ALPHA REAR ARM BOLT KIT

- Heavy-duty upgrade for extreme riders.
- Replaces two M6 cap screws with a through-bolt and lock nut

0637-535 | '19-'20 M A1 154-IN.-165-IN.



PRO MTN WINDSCREEN

- Unique design acts as a low-profile windscreen while providing glove/goggle storage
- Semi-rigid construction holds its shape

7639-293 | '18-'22 6/8000; '17-'22 9000; '14-'19 7000; '17-'19 3000 MODELS

EXTREME PROTECTION

FOR THE *TOUGHEST* CONDITIONS

8639-291 '21-22 M A1 154-in. - 165-in., Riot X 146-in.

8639-290 '19-20 M A1 154-in. - 165-in.

- Weighs 1.2-pounds per pair with rivets
- Reinforces entire mid-section of suspension rail to resist bending

Note: Replacement rails for '19-'20 Alpha models require 8639-291



**THIS BRACE KIT WAS DESIGNED FOR RACING COMPETITION
AND EXTREME RIDERS. AT HALF THE WEIGHT AND TWICE THE
STRENGTH OF BILLET, OUR BRACES WITHSTAND THE
GNARLIEST THE BACKCOUNTRY CAN DISH OUT.**



Mounting Track design allows you to easily slide a Utility Jug or Gear Bag on and off your tunnel. Raised mounting track keeps the gear away from your tunnel. Mounting tracks are made of HDPE plastic for durability plus resistance to snow and ice buildup. Heavy-duty Utility Jugs are UV-protected. Hard-sided Gear Bags are made of water-resistant polyester with a urethane-coated outer shell and feature padded foam lining. The Utility Jug and Gear Bag base slides easily onto the mounting track. Mounting Track, Utility Jugs and Gear Bags are sold separately. **NOTE:** Utility Jugs are not intended for fuel storage.



MOUNTING TRACK KIT

- Raised rail design helps keep your tunnel from being damaged
- Includes two 14-in. tracks and mounting hardware
- Fits models with a flat-top tunnel
- Tunnel Reinforcement Kit recommended for carrying fuel or heavy loads on M models

7639-204 | '12-'22 M; '14-'22 ZR, THUNDERCAT; '12-'19 XF HC; '17-'19 KING CAT; '13-'17 XF; '13 F



UTILITY JUG

- Available in two sizes
- 1.3 gallons, 9.75 in. x 6 in. x 9 in.
- 3.3 gallons, 9.75 in. x 13 in. x 9 in.

NOTE: Not intended for fuel storage

7639-205 | 1.3 GAL (FITS MOUNTING TRACK KIT)

7639-207 | 3.3 GAL (FITS MOUNTING TRACK KIT)



RAIL PACK

- Compact bag can be used alone or with 1.3-gallon utility jug (sold separately)
- Includes a zippered interior storage pocket
- 9.75 in. x 6 in. x 8.5 in.

7639-209 | FITS MOUNTING TRACK KIT



LOW-PROFILE BAG

- Includes a zippered interior storage pocket and elastic tie-down straps
- Exterior straps hold your shovel or gear
- 9.75 in. x 13 in. x 6.5 in.

7639-210 | FITS MOUNTING TRACK KIT



GEAR BAG

- Includes two zippered interior storage pockets and elastic tie-down straps
- Exterior straps hold your shovel or gear
- 9.75 in. x 13 in. x 8.5 in.

7639-211 | FITS MOUNTING TRACK KIT

The Float avalanche airbag system is designed to keep you at or near the surface during an avalanche. It is one of the most proactive snow safety tool you can carry into avalanche terrain. BCA Float avalanche airbags are both affordable and easily reusable.

- > Features a small 2,700-psi (186 bar) compressed-air cylinder, single-chamber 150-liter airbag and super-efficient venturi system
- > Trigger is located on right shoulder strap, allowing you to keep your right hand on the throttle
- > Includes pressurized air cylinder
- > Hazardous-shipping charges may apply



FLOAT MTNPRO 2.0 VEST

- Lightweight, protective vest with airbag
- Full front, side and back protection
- Two sizes to fit most riders
- Float 2.0 System
- Shovel not included
- 8.6 lbs., 20-liter capacity

8639-268 | M/L

8639-269 | XL/XXL



FLOAT 15 TURBO™

- Internal tool pocket for probe
- External shovel carry (shovel not included)
- Float 2.0 System
- 6.1 lbs., 15-liter capacity

8639-111 |



FLOAT 25 TURBO™

- Internal tool pocket for probe
- External shovel carry (shovel not included)
- Float 2.0 System
- 6.9 lbs., 25-liter capacity

8639-112 |

In an on-mountain emergency, these easy-to-use and efficient transceivers are a necessity among your supplies



TRACKER 3

- BCA's most efficient, progressive design and most precise pinpointing
- Instantaneous, real-time display
- Small and light with three antennas for no-nonsense multiple burial searching
- Includes harness

6639-406 |



TRACKER S

- Simplicity is speed — our stripped-down, more affordable transceiver
- All the performance of the T3, without motion-sensing or upgradeable software

8639-113 |

BCA Quick-Lock probes save valuable seconds when time matters. They offer the easiest and fastest assembly on the market, all while freeing up valuable storage space in your pack.



STEALTH 270

- High-strength aluminum probe with laser-etched depth markings for added durability
- Collapsed 17.7 in., extended 8 ft. 10 in.
- 10.4 oz.

6639-444 |

Strong group communication is the key to any successful day riding the mountains. Find separated riders, communicate plans and share observations in real time with the BC Link™ communication system. The Smart Mic user interface is located at your fingertips, meaning you never need to dig your 2-way radio out of your pack to change settings. Glove-friendly controls include: on/off and volume control, channel control, push-to-talk button, loudspeaker, earphone jack and battery indicator. Rechargeable lithium ion battery pack provides up to 4 days of battery life in cold weather. BC Link 2-way radios operate on 22 FRS GMRS channels + 121 sub-channels to ensure minimal interference.



BC LINK RADIO 2.0

- 2 watts for increased usable range

8639-114 | **BEST SELLER**



BC LINK RADIO 1.0

- 1 watt

7639-466 |



A-2 EXT SHOVEL

- An integrated shovel system with a larger blade and extendable handle
- Includes an 11.4-in. snow/wood saw stowed inside the grip
- Extends up to 30.5 in. long, 10 in. x 11 in. blade, 1.9 lbs.

5639-786 |



B-1 EXT SHOVEL

- Extendable-handle shovel with an amazing strength-to-weight ratio
- Tough oval shaft with an ergonomic grip
- Extends up to 28.75 in. long, 9 in. x 10 in. blade, 1.3 lbs.

8639-233 |



D-2 EXT SHOVEL

- Converts from a traditional shovel to a hoe
- Move more snow without lifting it
- Includes a 6.5-in. snow/wood saw stowed inside the shaft
- Extends to 32 in. long, 10 in. x 11 in. blade, 2.1 lbs.

7639-765 |



COBRA™

- Sled-to-sled pulling tool
- Made of stretch cords bundled in a corrugated vinyl tube with a hook on both ends
- Creates 300 to 400 lbs. of static pulling force

5639-640 |



RATTLER

- Maximizes the pulling force of your body
- Made of strong stretch cords bundled in a corrugated vinyl tube
- Safety strap hook attaches to the ski of the stuck sled with a grab handle on the other end

5639-639 |



SWITCH GUARDS

- Helps prevent accidental bumping of control switches
- Includes switch guard and adhesive

8639-097 | '20-'22 RIOT, RIOT X; '19-'22 M, ZR, THUNDERCAT; '19 XF (ALL)

5639-580 | '14-'18 ZR; '12-'18 M, XF; '12-'13 F



8639-170

RAIL BRACE KIT

- Provides strength and durability in extreme conditions
- Includes right and left rail braces and mounting hardware
- 8639-290, 8639-291 1.2 lbs., 8639-170 7.5 lbs.

8639-291 | '21-'22 M ALPHA 146-165-IN.; '21-'22 RIOT X, BLAST M

8639-290 | '19-'20 M ALPHA 154-165-IN.

8639-170 | '17-'19 M, MOUNTAIN CAT 153-IN.



LAYDOWN STEERING POST

- Converts M models with vertical steering to a fixed, laydown system
- Includes steering post and upper support
- Accepts standard bar riser; optional heights available separately

8639-136 | '14-'22 M (ALL); '14-'19 XF HIGH COUNTRY



FIXED VERTICAL STEERING POST

- Converts models with telescopic steering to a fixed post
- Includes upper steering post with a 4.5-in. riser block

7639-985 | '20 RIOT X 8000; '14-'19 XF HIGH COUNTRY 6/8000; '12-'15 M; '12-'13 XF HIGH COUNTRY 800



MOUNTAIN HANDLEBAR

- Includes over-molded grab strap, grips and heating elements

7639-983 LIGHTWEIGHT 2 LBS. | '19-'22 M 6/8000 (ALL)

7639-984 HEAVY-DUTY, 2.9 LBS. | (Same application as 7639-983)

7639-489 LIGHTWEIGHT, 2 LBS. | '12-'18 M; '14-'18 XF HIGH COUNTRY; '12-'15 XF

7639-490 HEAVY-DUTY, 2.9 LBS. | (Same application as 7639-489)



RAIL CAP WHEEL KIT

- Helps prevent track from contacting the slide-rail end caps
- Includes two 2.5 in. x 0.787 in. idler wheels, rail caps and a heavy-duty axle shaft

7639-987 | '20 RIOT X; '12-'14 M; '12-'15 XF; '05-'11 M



TRAIL

BORN ON THE TRAIL. WE LIVE FOR
WINDING RIDES AND WHITE KNUCKLES.



TRAIL FEATURED ACCESSORIES



TRAIL PACK

The Trail Pack is a compact storage unit for everything you need on the trail, from food to tools to electronics.

P. 14 | 8639-030



DASH CADDY

Provides extra storage for your small essentials. (Keys, phone, wallet)

P.15 | 8639-219



PASSENGER SEAT

Convenient, quick attach mounting system provides an easy conversion from single-seat to a 2-up passenger seat.

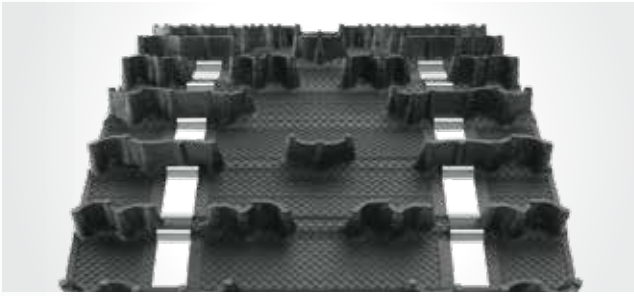
P. 16 | 8639-217

PRO BUMPER

Provides extra protection while giving your Cat extra style.

P. 26 | 8639-400

TRACKS



COBRA

- Cupped lugs for superior handling, acceleration and braking on soft, loose trails
- Excellent off-trail performance without sacrificing top speed



POWER CLAW™

- This lightweight single-ply track sets the standard for deep snow performance
- Stagger-set, curved-forward paddle towers won't fold over or take a set
- Available in 2.25-in. and 2.6-in. lug heights with 80 or 85 durometer



3-IN. POWER CLAW

- Full 3-in. lug height brings maximum control to even the deepest snow
- Lightweight single-ply track features stagger-set, curved-forward paddle towers that won't fold over or take a set
- 80 durometer hardness rating for rugged performance
- Requires 7-tooth driveshaft



HACKSAW™

- Crescent lug design with recessed tips and cutting edges provides grip on hard-packed trails
- Narrow lug base provides less rolling resistance for maximum top speed



RIPSAW™

- Aggressive angled lug profiles for outstanding traction on groomed trails
- Rigid lugs provide excellent durability



RIPSAW II

- Lug design combines the best features of Ripsaw and Cobra tracks for excellent all-around performance
- Less track noise for quieter operation on hard-packed trails



BACKCOUNTRY X

- Snocross-inspired, arched lugs are staggered for outstanding traction in soft snow
- Rigid lug support columns for on- and off-trail performance

PART NUMBER	DIMENSIONS	WT (LBS.)	CLIPS
PERFORMANCE 2.52 P			
3602-294	14 IN. X 121 IN. X 1.00 IN. - HACKSAW (SINGLE-PLY) - 80/70 DURO	27	EVERY 3RD
2602-046	15 IN. X 128 IN. X 1.25 IN. - RIPSAW - 80/70 DURO	41	EVERY 3RD
2602-835	15 IN. X 128 IN. X 1.50 IN. - RIPSAW - 80/70 DURO	42	EVERY 3RD
PERFORMANCE 2.86 P			
2602-575	15 IN. X 129 IN. X 1.00 IN. - RIPSAW II - 80/70 DURO	36	EVERY OTHER
2602-576	15 IN. X 129 IN. X 1.25 IN. - RIPSAW - 80/70 DURO	38	EVERY OTHER
2602-491	15 IN. X 129 IN. X 1.35 IN. - COBRA - 80/70 DURO	36	EVERY OTHER
2602-865	15 IN. X 129 IN. X 1.70 IN. - SNO PRO® - 80/70 DURO	42	EVERY OTHER
3602-202	15 IN. X 137 IN. X 1.00 IN. - RIPSAW - 80/70 DURO	36	FULLY CLIPPED
2602-627	15 IN. X 137 IN. X 1.25 IN. - RIPSAW II - 80/70 DURO	42	EVERY OTHER
2602-628	15 IN. X 137 IN. X 1.50 IN. - RIPSAW - 80/70 DURO	44	EVERY OTHER
2602-909	15 IN. X 137 IN. X 1.60 IN. - COBRA - 80/70 DURO	44	EVERY OTHER
2602-669	15 IN. X 137 IN. X 1.75 IN. - BACKCOUNTRY X - 80/70 DURO	45	EVERY OTHER
2602-933	15 IN. X 146 IN. X 1.35 IN. - COBRA - 80/70 DURO	44	FULLY CLIPPED
3602-237	15 IN. X 146 IN. X 1.60 IN. - COBRA - 80/70 DURO	47	FULLY CLIPPED
3602-240	15 IN. X 146 IN. X 2.00 IN. - CHALLENGER - 80 DURO	50	FULLY CLIPPED
TOURING 2.52 P			
2602-528	15 IN. X 136 IN. X 1.00 IN. - HACKSAW - 80/70 DURO	37	EVERY 3RD
2602-163	15 IN. X 144 IN. X 1.35 IN. - COBRA - 80 DURO	41	EVERY OTHER
TOURING 2.86 P			
2602-521	15 IN. X 146 IN. X 1.00 IN. - RIPSAW II - 80/70 DURO	42	EVERY 3RD
2602-512	15 IN. X 146 IN. X 1.25 IN. - RIPSAW - 80/70 DURO	44	EVERY 3RD
3602-067	15 IN. X 154 IN. X 1.60 IN. - COBRA (SINGLE-PLY) - 80/70 DURO	46	EVERY OTHER
MOUNTAIN 2.86 P			
3602-318 ALPHA	15 IN. X 146 IN. X 2.00 IN. - CHALLENGER/ALPHA - 80 DURO	50	EVERY OTHER
3602-292 ALPHA	15 IN. X 146 IN. X 2.60 IN. - CROSS COUNTRY/ALPHA (SINGLE-PLY) - 80 DURO	59	EVERY OTHER
3602-291 ALPHA	15 IN. X 154 IN. X 2.60 IN. - CROSS COUNTRY/ALPHA (SINGLE-PLY) - 80 DURO	60	EVERY OTHER
MOUNTAIN 3.0 P			
2602-169	15 IN. X 141 IN. X 1.35 IN. - COBRA (SINGLE-PLY) - 80 DURO	38	EVERY OTHER
2602-170	15 IN. X 141 IN. X 1.60 IN. - COBRA (SINGLE-PLY) - 80 DURO	40	EVERY OTHER
3602-143	15 IN. X 141 IN. X 2.25 IN. - POWER CLAW™ (SINGLE-PLY) - 80 DURO	44	EVERY OTHER
3602-141	15 IN. X 141 IN. X 2.60 IN. - POWER CLAW (SINGLE-PLY) - 80 DURO	48	EVERY OTHER
3602-145	15 IN. X 153 IN. X 1.75 IN. - BACKCOUNTRY X (SINGLE-PLY) - 80/70 DURO	50	EVERY OTHER
3602-142	15 IN. X 153 IN. X 2.25 IN. - POWER CLAW (SINGLE-PLY) - 80 DURO	51	EVERY OTHER
2602-399	15 IN. X 153 IN. X 2.25 IN. - POWER CLAW (SINGLE-PLY) - 85 DURO	48	EVERY OTHER
3602-140	15 IN. X 153 IN. X 2.60 IN. - POWER CLAW (SINGLE-PLY) - 80 DURO	56	EVERY OTHER
2602-482	15 IN. X 153 IN. X 2.60 IN. - POWER CLAW (SINGLE-PLY) - 85 DURO	56	EVERY OTHER
3602-138	15 IN. X 153 IN. X 3.00 IN. - POWER CLAW (SINGLE-PLY) - 80 DURO	53	EVERY OTHER
2602-483	15 IN. X 162 IN. X 2.60 IN. - POWER CLAW (SINGLE-PLY) - 80 DURO	58	EVERY OTHER
2602-484	15 IN. X 162 IN. X 2.60 IN. - POWER CLAW (SINGLE-PLY) - 85 DURO	58	EVERY OTHER
3602-137	15 IN. X 162 IN. X 3.00 IN. - POWER CLAW (SINGLE-PLY) - 80 DURO	56	EVERY OTHER
MOUNTAIN 3.5 P			
3602-154 ALPHA	15 IN. X 154 IN. X 3.00 IN. - POWER CLAW/ALPHA (SINGLE-PLY) - 80 DURO	50	EVERY OTHER
3602-155 ALPHA	15 IN. X 165 IN. X 3.00 IN. - POWER CLAW/ALPHA (SINGLE-PLY) - 80 DURO	54	EVERY OTHER
UTILITY 2.52 P			
2602-314	15 IN. X 151 IN. X 1.25 IN. - RIPSAW (SINGLE-PLY) - 80/70 DURO	46	EVERY OTHER
1602-869	20 IN. X 156 IN. X 1.25 IN. - 80 DURO	67	FULLY CLIPPED
UTILITY 2.86 P			
2602-358	20 IN. X 154 IN. X 1.375 IN. (SINGLE-PLY) - 80/70 DURO	60	EVERY 3RD
2602-639	20 IN. X 154 IN. X 1.375 IN. (SINGLE-PLY) - 60 DURO	61	EVERY OTHER
3602-058	20 IN. X 154 IN. X 1.375 IN. - BEAR CLAW (SINGLE-PLY) - 80/70 DURO	54	EVERY OTHER
3602-059	20 IN. X 154 IN. X 1.60 IN. - BEAR CLAW (SINGLE-PLY) - 80/70 DURO	56	EVERY OTHER

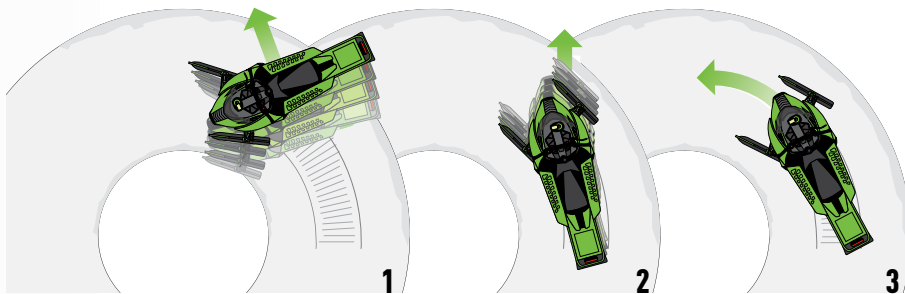
All tracks listed feature an "All Open" window configuration with 2-ply construction (unless noted as Single-Ply). *ACT Quiet Tracks are for use on '03 and newer models only.

ALPHA CHOOSE YOUR ALPHA TRACK!

TRACTION & CONTROL

MAXIMIZE STEERING CONTROL

The length of the turning carbide (carbide inserted directly under the steering spindle) is the determining factor on steering control. The longer the turning carbide, the more positive turning becomes. Too few studs with long turning carbides can result in the situation shown in Illustration 1 below.



MAXIMIZE TRACTION CONTROL

The quantity and types of studs inserted through the track can have several effects. If installed improperly, track and/or stud damage can result. If the pushing force from an excessive number of studs exceeds the ability of the steering to control the force, the effect could be like that in Illustration 2. In this case, the studs tend to "push" the skis in a straight line.

- 1 Back end loose. Too much carbide, not enough steering control.
- 2 Front end pushes. Weak steering from worn wearbars, turning carbides too short or overstudding on track.
- 3 Steering control and stud quantity are in balance for proper setup.

TUNE YOUR SLED'S HANDLING TO YOUR RIDING STYLE

Determining the proper traction and control is simple. What's your riding style: Are you a conservative trail rider or a performance trail rider? Look at the chart below. Find the line with the horsepower of your sled. Look under your riding category. Here you will find the number of studs and the length of the carbide wearbar you should use. This is a baseline guide for stud and wearbar selection. See your dealer for specific model applications.

STUD QUANTITY / INCHES OF TURNING CARBIDE

SLED	TRAIL	PERFORMANCE
50-75 HP	48/4 in.	48/6 in.
75-125 HP	102/6 in.	153/8 in.
125-150 HP	153/8 in.	153/10 in.
150-200 HP	153/8 in.	153/10 in.

FOR STUD PLACEMENT, USE AN ARCTIC CAT-APPROVED STUD TEMPLATE SHOWN ON PAGE 72.

Arctic Cat traction products are available in package quantities that will give you the best combinations for 129-in. and 137-in. tracks.

RECOMMENDED STUD LENGTH (IN.)

TRACK LUG HEIGHT	WOODY'S® STUD LENGTH
1.000	1.075
1.250	1.325
1.352	1.325
1.500	1.575
1.600	1.575

Cobra 1.35/1.60 in. tracks have a standard lug height of 1.25/1.50-in in. The overall lug height including the extended "towers" is 1.35 in. Because the towers will flex, Cobra 1.35-in. These Cobra tracks do not use studs longer than their nominal lug height.



CAUTION

- To protect the tunnel from possible damage from the studs, it is recommended that Tunnel Protector Kit be installed on those models not so equipped
- A Short Snowflap is required when installing studs on '07-'09 F Series; '09 Z1, Z1 Turbo; '09-'11 Crossfire™ and CFR
- See your dealer for additional information

STUD PLACEMENT

- DO NOT use studs that are longer than recommended
- DO NOT place studs in line with the heat exchanger or tunnel protector strip, and factor in the amount of suspension travel to avoid tunnel damage
- Studs MUST NOT extend more than 3/8 in. beyond the rubber track lugs
- Verify adequate clearance between the track, tunnel and heat exchanger to avoid serious damage
- Confirm that your machine has adequate tunnel protection before installing studs
- Use an Arctic Cat-approved Stud Template shown on page 72
- The length of carbide and number of studs must coordinate to result in balanced handling and proper control

GRAND MASTER® (SINGLE-PLY) TRACTION KITS

- Studs feature a larger head design required for use on models with a single-ply track
- Includes studs, support plates, big nuts, template, stud drill and track marker
- 60° carbide, 5/16-in. thread, 1.20-in. head, 1.50-in. support plates

8639-421 96/PK | '21-'22 BLAST ZR; 121-IN. X 1.00-IN. 2.52 P (1.075-IN. STUDS) **NEW**

7639-741 108/PK | '18-'19 BEARCAT 7000 XT 20-IN. X 154-IN. X 1.60-IN. 2.86 P (1.575-IN. STUDS)

5639-626 108/PK | '11-'17 BEARCAT XT 154-IN. X 1.375-IN. 2.86 P (1.450-IN STUDS)



DOOLY™ TWIN CARBIDE WEARBAR

- Great, all-trail performance
- Reduces darting
- Features two carbide runners
- Fits '05-'22 Arctic Cat Saddleless Skis
- Sold individually

3639-343 4-IN. | CARBIDE W/ HARDWELD **BEST SELLER**

3639-344 6-IN. | CARBIDE W/ HARDWELD **BEST SELLER**

3639-345 8-IN. | CARBIDE W/ HARDWELD



7639-138

TUNNEL PROTECTOR KIT

- Required when installing studs on models listed below

7639-138 | '20-'22 RIOT; '18-'22 ZR 6/8000; '17-'22 ZR 9000, THUNDERCAT; '18-'19 PANTERA 6000, XF CROSS COUNTRY, CROSSTREK 6/8000; '17-'19 XF 9000; 129-146-IN.

6639-075 | '14-'17 ZR 6/8000; '15-'17 ZR 4000; '14-'16 ZR 5/9000; '13 F 129-IN.

6639-118 | '16-'17 ZR 6/8000; '17 ZR 5000; '16 ZR 9000; '13-'15 XF 6/8/9000 137-IN.



SINGLE RUNNER

- Ideal on ice and hardpack, but works well anywhere
- May provide a noted speed increase compared to a dual wearbar
- Hardweld wearbars have a 7/16-in. host bar, carbide wearbars have a 1/2-in. host bar
- Fits '05-'22 Arctic Cat Saddleless Skis
- Sold in pairs

3639-309 | HARDWELD WEARBAR

3639-310 | 4-IN. CARBIDE W/ HARDWELD

3639-311 | 6-IN. CARBIDE W/ HARDWELD

3639-312 | 8-IN. CARBIDE W/ HARDWELD



ACE™ WEARBARS

- Utilizes a preformed, square steel bar with a tall, aggressive profile
- Provides excellent control
- Fits '05-'22 Arctic Cat Saddleless Skis
- Sold in pairs

6639-850 | 6-IN. CARBIDE

6639-799 | 8-IN. CARBIDE



SHAPER™ WEARBARS

- Offers more precise turning than conventional wearbars
- 20% lighter than round wearbars
- Fits '05-'22 Arctic Cat Saddleless Skis
- Sold in pairs

4639-949 | 4.5-IN. CARBIDE

4639-950 | 6-IN. CARBIDE

4639-951 | 9-IN. CARBIDE



DEUCE™ TWIN CARBIDE WEARBARS

- Reduces darting and eliminates dual-runner-type drag
- Durable one-piece design
- Fits '05-'22 Arctic Cat Saddleless Skis
- Features two carbide runners
- Sold individually

5639-251 4.5-IN. | CARBIDE W/ HARDWELD

5639-252 6-IN. | CARBIDE W/ HARDWELD

5639-253 9-IN. | CARBIDE W/ HARDWELD



STAGGERED WEARBARS

- Features a single carbide runner and an offset hardweld runner
- Lighter steering than a dual carbide runner
- Reduces darting and plugging
- Available with a standard (0.312) or aggressive (0.500) bar
- Its '05-'22 Arctic Cat Saddleless Skis
- Sold individually

2703-598 | 4-IN CARBIDE 3-BOLT (RH) .312 (STANDARD)

2703-599 | 4-IN CARBIDE 3-BOLT (LH) .312 (STANDARD)

2603-988 | 4-IN CARBIDE 3-BOLT (RH) .500 (AGGRESSIVE)

2603-989 | 4-IN CARBIDE 3-BOLT (LH) .500 (AGGRESSIVE)

2603-930 | 4-IN CARBIDE 4-BOLT (RH) .500 (AGGRESSIVE)

2603-931 | 4-IN CARBIDE 4-BOLT (LH) .500 (AGGRESSIVE)

! SINGLE-PLY TRACK WARNING

WHEN INSTALLING STUDS ON A SINGLE-PLY TRACK, IT IS IMPORTANT TO USE ARCTIC CAT-APPROVED STUDS AND SUPPORT PLATES WITH THE PROPER DIAMETER. IF APPROVED STUDS AND SUPPORT PLATES ARE NOT USED, STUDS COULD TEAR FREE OF THE TRACK, CAUSING POSSIBLE INJURY OR EVEN DEATH

SINGLE-PLY TRACKS

'21-'22 BLAST ZR; '20 RIOT X; '18-'19 NORSEMAN 3/6000; '16-'19 BEARCAT, PANTERA 7000 XT; '15-'20 BEARCAT 2000; '15 BEARCAT 5000; '14-'15 XF CROSS COUNTRY, CROSSTOUR; '12-'13 XF; '10-'14 BEARCAT 570, Z1 XT

2-PLY TRACKS

'20-'22 RIOT; '14-'22 ZR, THUNDERCAT; '16-'19 XF; '12-'13 F; '15-'19 PANTERA 3/6/7000, '16-'17 BEARCAT 3000, '15-'20 LYNX 2000, '11-'14 SNO PRO; '09-'14 T570, TZ1

GOLD DIGGER® TRACTION MASTER® (2-PLY) TRACTION KITS - ROUND & DOUBLE PLATES

- Includes studs, support plates, big nuts, template, stud drill and track marker

8639-235 96/PK | '19-'20 THUNDERCAT; '20 ZR SNO PRO 137-IN. X 1.00-IN. 2.86 P (1.075-IN. STUDS)

8639-100 144/PK | (Same application as 8639-235)

GOLD DIGGER TRACTION MASTER (2-PLY) TRACTION KITS - ROUND PLATES

- Includes studs, support plates, big nuts, template, stud drill and track marker

8639-224 102/PK | '20-'22 RIOT 146-IN. X 1.35-IN. 2.86 P (1.325-IN. STUDS)

8639-234 102/PK | '20-'22 RIOT; '21-'22 BLAST LT, XR (ALL) 146-IN. X 1.60-IN. 2.86 P (1.575-IN. STUDS)

SIGNATURE SERIES™ (2-PLY) TRACTION KITS - SQUARE PLATES

- Includes studs, support plates, big nuts, template, stud drill and track marker

6639-454 96/PK | '16-'22 ZR; '17-'18, 21-'22 THUNDERCAT; '14-'15 XF LXR, SNO PRO; 137-IN. X 1.25-IN. 2.86 P (1.325-IN. STUDS)

6639-455 144/PK | (Same application as 6639-454)

SIGNATURE SERIES (2-PLY) TRACTION KITS - ROUND PLATES

- Includes studs, support plates, standard or big nuts, template, stud drill and track marker

6639-856 96/PK | '16-'22 ZR; '17-'18, 21-'22 THUNDERCAT; '14-'15 XF LXR, SNO PRO; 137-IN. X 1.25-IN. 2.86 P (1.325-IN. STUDS)

6639-857 144/PK | (Same application as 6639-856)

7639-564 102/PK | '16-'19 PANTERA 7000; '18-'19 PANTERA 6000; '16-'18 XF CROSSTOUR 7000 146-IN. X 1.25-IN. 2.86 P (1.325-IN. STUDS)

SIGNATURE SERIES (2-PLY) TRACTION KITS - SQUARE & DOUBLE PLATES

- Includes studs, support plates, standard or big nuts, template, stud drill and track marker

8639-293 135/PK | '14-'19 ZR SNO PRO, RR; '13 F SNO PRO 129-IN. X 1.25-IN. 2.86 P (1.325-IN. STUDS)



GOLD DIGGER TRACTION MASTER (2-PLY)

- 60° carbide, 5/16-in. thread, 1-in. head
- The industry-leading and best-selling trail stud
- Outstanding penetration and durability on ice and hardpack from a 60° carbide tip
- Support Plates sold separately



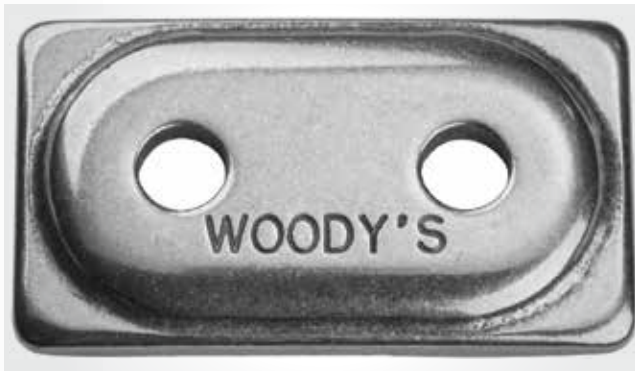
SIGNATURE SERIES STAINLESS STEEL (2-PLY)

- 60° carbide, 5/16-in. thread, 15/16-in. head
- Woody's proven push-through stainless steel stud at a competitive price
- Support Plates sold separately



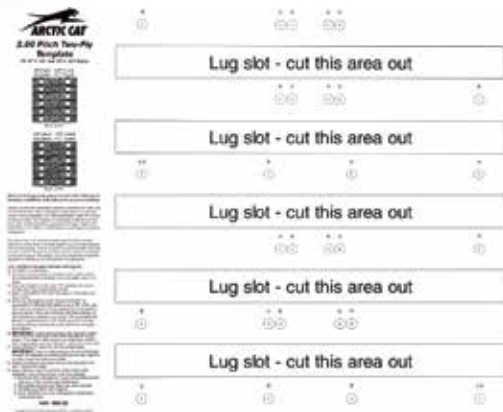
DIGGER® (2-PLY) SUPPORT PLATES

- Lightweight aluminum offers serious support
- Added strength from crowned profile
- 1.250-in. square; 1.375-in. round



DOUBLE DIGGER® (2-PLY) SUPPORT PLATES

- Unmatched support from durable aluminum



STUD TEMPLATE

- Available in patterns perfectly matched to your riding style

8639-227 | '20-'22 RIOT; '16-'19 PANTERA, XF CROSSTOUR 146-IN.; '16-'22 ZR, THUNDERCAT, '16-'18 XF CROSSTREK, '14-'15 XF 137-IN.; '14-'19, '21 ZR, '13 F 129-IN. 2.86 P (2-PLY)



STUD DRILL

- Cuts cleanly for precise stud locations

1639-629 |



TRACK MARKER

- Ensures track pattern aligns perfectly with stud template

1639-520 |



TRACK TENSION TOOL

- Maintain your track tension for optimum performance

7639-153 |





CAT CADDY

- Superior mobility from 2.5-in. swivel casters
- Includes two ski dollies and a track dolly

5639-873 BLACK | PLASTIC **BEST SELLER**

5639-874 GREEN | PLASTIC **BEST SELLER**

4639-766 BLACK | ALUMINUM



4.3A BATTERY CHARGER

- A great all-around charger every household should have
- Special cold-weather performance and adapted AC and DC cables to handle severe cold down to -22°F (-30°C)
- Features four modes: LOW CURRENT MODE for smaller 12V batteries used in snowmobiles and ATV/UTV HIGH CURRENT MODE for automotive or marine applications WINTER MODE for charging and maintenance in cold weather RECONDITIONING MODE for deeply discharged batteries
- Fully automatic for charging and maintenance
- Takes its own readings and begins to charge
- Once finished charging, it will switch to a maintenance phase
- Features a patented method for reconditioning sulfated batteries
- Spark-free, making connection safer and easier
- Extends battery life
- Includes alligator clips and ring terminal leads
- 12V, 4.3A

7639-504 | **BEST SELLER**



RATCHET TIE-DOWNS

- Spring-loaded retainer clips prevent S-hooks from falling off
- Comfortable ratchet-handle grip
- Large grab handle for easy length adjustment
- 1.125 in. x 102 in., 1,200-lb. rating; sold in pairs

7639-183 |



DELUXE TIE-DOWNS

- Protects against scratching with integrated soft end loop
- Heavy-duty nylon straps with dual S-hook retainer clips
- 1.125 in. x 78 in., 1,200-lb. rating; sold in pairs

7639-182 |



TOW STRAP

- Safe, easy towing with even weight distribution
- Durable nylon strap, pouch included
- For towing disabled vehicle, never use to tow or transport people; use a solid hitch when towing or transporting people

4639-247 |



STANDARD TIE-DOWNS

- Secures sled to trailer with heavyweight nylon straps
- 1 in. x 69 in., 1,000-lb. rating; sold in pairs

7639-181 |



TOW ROPE

- Easy-attach spring-clip buckles
- Heavy-duty nylon rope
- For towing disabled vehicle, never use to tow or transport people; use a solid hitch when towing or transporting people

0636-577 |



0.8A BATTERY CHARGER

- The ideal maintenance charger for 12V batteries
- Fully automatic for charging and maintenance
- Takes its own readings and begins to charge
- Once finished charging, it will switch to a maintenance phase
- Features a patented method for reconditioning sulfated batteries
- Spark-free, making connection safer and easier
- Extends battery life
- Includes alligator clips and ring terminal leads
- 12V, 0.8A

7639-503 |



1.5A BATTERY MAINTAINER

- Fully-automatic maintainer for powersports batteries
- Automatic voltage detection
- Reverse hook-up protection
- Includes alligator clips and ring terminal leads
- 12V, 1.5A

8639-357 |



BATTERY JUMP PACK

- Quickly start your snowmobile or ATV/UTV
- Lightweight, long-lasting 8,000 mAh lithium ion power source
- Features LCD display, two USB power/charging ports, a 2.1A for tablets, a 1A for mobile phones, and a powerful 3-mode LED light
- Cranking current: 400A peak, 200A cranking
- Includes smart cables and a USB charging cord

2436-980 |

ENGINE REBUILD KITS

- Give your Cat another life with a rebuild kit! Includes everything needed to refresh your engine.
- Piston + ring assemblies
- Wrist pins + bearings + shims
- Top end gasket set
- Spark plugs

8639-238 | '10-'17 800/8000 MODELS

8639-239 | '14-'19 6000 MODELS

8639-240 | '18-'19 8000 MODELS

TOUCH UP PAINT

- Repair scratches and keep your Cat looking like new with genuine, factory color touch-up paint
- Available in 1/2 OZ (15 ML) bottle or 12 OZ (354 ML) aerosol
- See your dealer for specific vehicle application and complete details

BLACK



0652-100 PLASTIC 0.5 OZ | UNIVERSAL
0652-110 METAL 0.5 OZ | '00-'17 MODELS
0652-024 METAL 12 OZ | '00-'17 MODELS
0652-228 METAL 0.5 OZ | '18-'22 MODELS
0652-229 METAL 12 OZ | '18-'22 MODELS

BALLISTIC BRONZE



0652-240 0.5 OZ | '20 MODELS
0652-241 12 OZ | '20 MODELS

CAT GREEN



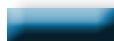
0652-077 12 OZ | '98-'11 MODELS

DYNAMIC CHARCOAL



0652-242 0.5 OZ | '20-'22 MODELS
0652-243 12 OZ | '20-'22 MODELS
0652-222 0.5 OZ | '17-'19 MODELS
0652-223 12 OZ | '17-'19 MODELS

ELECTRIC BLUE



0652-248 0.5 OZ | '20 MODELS
0652-249 12 OZ | '20 MODELS

FIRE RED



0652-218 0.5 OZ | '17-'22 MODELS
0652-219 12 OZ | '17-'22 MODELS

HYPER GREEN



0652-244 0.5 OZ | '20-'22 MODELS
0652-245 12 OZ | '20-'22 MODELS

MEDIUM GREEN



0652-220 0.5 OZ | '17-'22 MODELS
0652-221 12 OZ | '17-'22 MODELS

ORANGE



0652-105 TOP COAT 0.5 OZ | '06-'11 MODELS
0652-141 0.5 OZ | '08-'22 MODELS
0652-142 12 OZ | '08-'22 MODELS

PEARL CAT GREEN



0652-144 0.5 OZ | '08-'13 MODELS
0652-117 PLASTIC 12 OZ | '08-'13 MODELS
0652-145 METAL 12 OZ | '08-'13 MODELS

PEARL WHITE



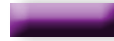
0652-182 BASE 12 OZ | '12 MODELS
0652-176 TOP 12 OZ | '12 MODELS

PLATINUM



0652-096 12 OZ | '02-'11 MODELS

PURPLE



0652-238 0.5 OZ | '19 MODELS
0652-239 12 OZ | '19 MODELS

QUICKSILVER



0652-250 0.5 OZ | '20 MODELS
0652-251 12 OZ | '20 MODELS

SUBLIME GREEN



0652-164 BASE 0.5 OZ | '11 MODELS

SUNSET ORANGE



0652-149 12 OZ | '14 MODELS

TEAM ARCTIC GREEN



0652-199 0.5 OZ | '14-'18 MODELS
0652-200 12 OZ | '14-'18 MODELS

WHITE



0652-119 BASE 0.5 OZ | '06-'11 MODELS
0652-189 PLASTIC 0.5 OZ | '14-'22 MODELS
0652-190 METAL 12 OZ | '14-'22 MODELS

Colors shown are approximation - contact your dealer with questions.

BELTS

- > Custom fit to match each Arctic Cat sled and specific use
- > Better contact with clutch surface and faster acceleration from double cogs
- > Increased belt life by running cooler than aftermarket belts
- > Premium reinforced with Aramax® aramid fibers for strength and durability
- > Increased power transmission with less slip
- > Kevlar® drive belts available for high performance models, which dramatically extend belt life and sustain belt length better than traditional cords

NOTE: Proper break-in period required.

PREMIUM ARCTIC CAT "EXTENDED-LIFE" ORIGINAL EQUIPMENT REPLACEMENT BELTS

Don't settle for anything less than a drive belt built specifically for your sled. Proven through extensive lab and field testing, original equipment Arctic Cat replacement belts are precision-engineered for each Arctic Cat snowmobile.

CUSTOM-ENGINEERED FIT

While non-OEM aftermarket belts offer "one construction fits all," Arctic Cat Research & Development custom engineers each genuine Arctic Cat belt to match the specific performance characteristics of your sled. This produces the best combination of strength, durability and responsiveness for lower-horsepower, fan-cooled sleds all the way up to high-horsepower muscle sleds. Each one is built using only state-of-the-art materials, incorporating precision manufacturing techniques to meet exacting tolerances.

TOP & BOTTOM COGS

Arctic Cat original equipment belts are double cogged, so more of the belt contacts the clutch surfaces. This results in faster acceleration, maximum efficiency and superb overall performance. Double-cog design provides structure while adding surface area for greater cooling and longer life. In fact, our belt runs cooler than flat-top aftermarket belts.

ARAMAX HIGH-MODULUS ARAMID-FIBER TENSILE MEMBER

The Aramax inner cord provides incredible strength and durability for high-horsepower, high-performance sleds. In addition, each belt is chemically treated for maximum power transmission and length stability.

HIGH PERFORMANCE PREMIUM COMPOUNDS

Arctic Cat's OEM belts incorporate advanced "premium" compound materials that ensure optimum belt performance under all riding conditions. The advanced aramid-fiber-loaded rubber compound resists wear and delivers consistent power while minimizing slippage over a broad range of operating temperatures. The thicker, highly flexible design increases grip to clutch surfaces for increased power transmission.

ARCTIC CAT KEVLAR DRIVE BELTS

These ultimate-performance Arctic Cat Kevlar drive belts are custom engineered for high performance models. Extended-life belts feature top- and bottom-molded cog construction and high-performance compounds. Inside, the Kevlar cord provides increased belt life. Please note that proper belt "break-in" is required.



BELT REPLACEMENTS

2015

Bearcat 2000	0627-067
Bearcat 2000 XT	0627-046
Bearcat 5000 XT	0627-047
Bearcat GS	0627-073
Lynx 2000	0627-067
M 6000	0627-083
M 8000	0627-084
M 9000	0627-082
Pantera 7000	0627-069
XF 7000	0627-070
XF 8000	0627-083
XF 8000 High Country	0627-084
XF 9000	0627-082
ZR 4000	0627-083
ZR 5000	0627-081
ZR 6000, R XC	0627-083
ZR 6000R SX	0627-086
ZR 7000	0627-070
ZR 8000	0627-083
ZR 9000	0627-082

2016

Bearcat 2000 LT	0627-067
Bearcat 2000 XT	0627-046
Bearcat 3000 LT	0627-081
Bearcat 7000 XT	0627-102
Bearcat 7000 XT GS	0627-102
Lynx 2000	0627-067
M 6000	0627-083
M 7000	0627-070
M 8000	0627-084
M 9000	0627-082
Pantera 7000	0627-070
Pantera 7000 XT LTD	0627-102
Pantera 3000	0627-081
XF 6000	0627-070
XF 7000	0627-070
XF 8000	0627-083
XF 8000 High Country	0627-084
XF 9000	0627-082
ZR 4000	0627-083
ZR 5000	0627-081
ZR 6000, R XC	0627-083
ZR 6000R SX	0627-086
ZR 7000	0627-070
ZR 8000	0627-083
ZR 9000	0627-082

2017

Bearcat 2000 LT	0627-067
Bearcat 2000 XT	0627-046
Bearcat 3000 LT	0627-081
Bearcat 7000 XT	0627-102
Lynx 2000	0627-067
M 6000	0627-083
M 8000	0627-084
Pantera 3000	0627-081
Pantera 7000	0627-070
Pantera 7000 XT Ltd	0627-102
XF 6000	0627-083
XF 7000	0627-070
XF 8000	0627-084
XF 9000	0627-112
ZR 3000	0627-081
ZR 4000	0627-083
ZR 5000	0627-081
ZR 6000, R XC	0627-083
ZR 6000R SX	0627-086
ZR 7000	0627-070
ZR 8000	0627-084
ZR 9000	0627-112

2018

Bearcat 2000 LT	0627-067
Bearcat 7000 XT	0627-102
Bearcat 7000 XT GS	0627-102
Bearcat XT	0627-114
Lynx 2000	0627-067
M 6000	0627-107
M 8000	0627-111
M 9000	0627-112
Norseman 3000	0627-081
Norseman 6000	0627-107
Pantera 3000	0627-081
Pantera 6000	0627-107
Pantera 7000	0627-110
Pantera 7000 XT LTD	0627-102
XF 6000	0627-107
XF 7000	0627-110
XF 8000	0627-111
XF 9000	0627-112
ZR 200	0627-106
ZR 3000	0627-081
ZR 6000, R XC	0627-107
ZR 6000R SX	0627-086
ZR 7000	0627-110
ZR 8000	0627-111
ZR 9000	0627-112

2019

Bearcat 7000 XT	0627-102
Lynx 2000	0627-067
M 6000	0627-107
M 8000	0627-111
M 9000	0627-112
Norseman 3000	0627-081
Norseman 6000	0627-107
Norseman 8000	0627-111
Pantera 3000	0627-081
Pantera 7000 LTD	0627-110
Pantera 7000 XT LTD	0627-102
XF 6000	0627-107
XF 8000	0627-111
XF 9000	0627-112
ZR 200	0627-106
ZR 3000	0627-081
ZR 6000, R XC	0627-107
ZR 6000R SX	0627-120
ZR 7000	0627-110
ZR 8000	0627-111
ZR 9000	0627-112

2020

Lynx 2000	0627-067
M 6000	0627-107
M 8000	0627-111
Riot 6000	0627-107
Riot/X 8000	0627-111
ZR 200	0627-106
ZR 6000	0627-107
ZR 8000	0627-111
ZR 9000	0627-112

2021

Blast 4000	0823-683
M 8000	0627-111
Riot 6000	0627-107
Riot/X 8000	0627-111
ZR 200	0627-106
ZR 6000, R XC	0627-107
ZR 6000R SX	0627-120
ZR 8000	0627-111
ZR 9000	0627-112

OIL & CARE



16510
HYPERGLIDE
HYPERGLIDE

CTEC2
HYPERGLIDE
HYPERGLIDE



C-TEC2™ SYNTHETIC OIL

The C-TEC2 revolutionary clean-burning engine technology demands an entirely unique oil formulation. This lubrication system effectively delivers oil where it is required — as a result using significantly less oil compared with traditional 2-cycle engines. This technology requires a unique viscosity and blend of additives and base stocks. After several years of intense testing, numerous formulations, thousands of dyno hours and hundreds of thousands of field test miles, we landed on this unique oil technology.

- The ONLY oil recommended for the C-TEC2 engine, but approved for ALL Arctic Cat 2-cycle engines
- Reduction in recoil pull-effort during cold weather starting
- Convenient C-TEC2 oil packaging provides easier pourability and less waste
- Fully synthetic formulation provides ultimate engine protection
- Detergent additives maximize Arctic Power Valve™ and engine cleanliness
- Smokeless formulation burns extremely clean with a fresher scent

8639-118	1 QUART
7639-840	1 GALLON
6639-521	2.5 GALLONS

APV™ SYNTHETIC OIL

- Outstanding performance for all non-C-TEC2 Arctic Cat 2-cycle engines
- Protects against engine wear with excellent lubricity
- Provides excellent Arctic Power Valve cleanliness
- Smokeless formulation burns clean
- Helps prevent piston scuffing, varnish formation and deposit buildup



4639-349	1 QUART
5639-469	1 GALLON
4639-347	2.5 GALLONS

FORMULA 50

- Mineral based 50:1 injection oil is recommended for non-Arctic Power Valve 2-cycle engines
- Performs well over a wide range of operating temperatures
- Minimizes engine wear
- Prevents rust/deposit formation



5639-475	1 QUART
5639-476	1 GALLON
5639-477	2.5 GALLONS

C-TEC4™ SYNTHETIC OIL CHANGE KIT

- Provides superior performance in ALL operating conditions including in the extreme cold
- Synthetic base stocks offer high lubricity that protects engine from wear and scuffing
- Exclusive formulation includes additives that help prevent deposit formations, ring sticking and engine wear
- Includes one gallon of synthetic C-TEC4 oil, oil filter, O-ring washer and disposable funnel

6639-524	1 QUART (OIL ONLY)
6639-525	1 GALLON (OIL ONLY)
6639-528	'07-'16 5/9000 MODELS (1056CC 2-CYL)
6639-529	'17-'22 9000 MODELS (998CC 3-CYL); '14-'19 7000 MODELS (1049CC 3-CYL)
7639-042	'15-'19 3000 MODELS (700CC 2-CYL)

4-STROKE OIL



Package quantities, specifications and materials may change without notice. For a dealer near you, visit arcticcat.com.



ACT™ DRIVE FLUSH FLUID

- Flush ACT gearcase to remove contaminants and wear particles before replacing ACT gearcase fluid

4639-333 | 6 OZ.



DOT 4 BRAKE FLUID

- Premium fluid designed with corrosion and oxidation inhibitors has over a 10% higher wet boiling point than DOT 4 minimum requirements
- Provides firm brake-feel in all conditions, even if moisture is introduced into the brake system

5639-848 | 12 OZ.



SYNTHETIC ACT GEARCASE FLUID

- Specially formulated for the ACT drive system
- Full synthetic lubricant that stays consistent across a broad temperature range so it flows well when cold and won't break down when hot
- Protects against wear and corrosion in ACT drive systems with reverse

5639-219 | 15 OZ.

7639-080 | 27.1 OZ.

5639-632 | 1 GALLON HD 3-SPEED TRANSMISSION



ARCTIC CAT ANTIFREEZE - 60/40 EXTENDED LIFE

- Premixed and ready to pour
- Protects against freezing to -62°F and has boiling point of 270°F
- Bitterant additive reduces likelihood of animal ingestion
- Extended-life antifreeze 3 times longer service life

2436-871 | GALLON



SYNTHETIC CHAIN LUBE

- Full synthetic formulation resists breakdown and helps protect against wear at extreme high or low temperatures
- Inhibits rust and corrosion during periods of non-use or extended storage
- Made with additive that protects internal components and conditions seals

5639-038 | 8 OZ.

6639-539 | 15 OZ.

6639-117 | 2.5 GALLONS



SEMI-SYNTHETIC SHOCK OIL

- Engineered with a high viscosity index (VI) formulation
- Provides superior, consistent performance in severe operating and racing conditions
- Protects against wear, foaming, oxidation and corrosion

5639-530 | QUART



SYNTHETIC SHOCK OIL

- Full synthetic medium weight shock oil protects against wear, fading, foaming, oxidation, rust and corrosion
- Proven superior performance under extreme conditions
- Best choice for servicing gas shocks that will see heavy-duty trail or racing use

4639-368 | QUART



FUEL TREATMENT

- Dual- antioxidant formula protects fuel system
- Stabilizes fuel for up to 2 years
- Safe for all power sports applications
- Ethanol compatible
- Convenient measuring cup

2436-868 | 12 OZ.



ARCTIC CAT EXTREME LOW TEMP GREASE

- Premium synthetic base makes Arctic Cat Low-Temp Grease perform in extreme winter conditions, -40°F to 300°F
- Keeps contaminants from entering and damaging suspension components
- Exceptional cold temp bearing and pivot point performance

7639-517 | 10 OZ.



FUEL DE-ICER

- Prevents system failure at the coldest of temps
- Safe on internal parts
- Water-absorbing isopropyl blend

0436-906 | 12 OZ.



INSTANT DETAILER

- Polishes and protects
- Showroom-quality shine
- Resists finger markings
- Greaseless finish

5639-849 | 16 OZ.

INDEX





A

ACCESSORIES

ACCESSORY KITS	4-9
BAGS	16-19
BELTS	78-79
COVERS	12-15
CUSTOMIZE	32-41
DEMERBOX	41
GARAGE	74-79
GARMIN	26-27
MOUNTAIN	52-63
OIL & CARE	80-83
PERFORMANCE	48-51
RAILS	56-57
TRACKS	66-67
TRACTION & CONTROL	68-72
TOURING	20-25
WINDSCREENS	28-30
YOUTH	42-45

AVALANCHE GEAR

AVALANCHE TRANSCIVERS	60
AVALANCHE AIRBAGS	59
BC LINK RADIOS	60-61
SHOVELS	61

B

BATTERY

CHARGERS	76
JUMP PACK	76
MAINTAINER	76
BELTS	78

BLAST FEATURED ACCESSORIES 10-11

BAGS	17-19
HANDLEBAR	18-19
CARGO	18
WINDSHIELD	29
BATTERY CHARGERS	75-76
BUMPERS	
FRONT	33, 36
REAR	55

WINDSHIELD	
BAR RISERS	35
BATTERY CHARGERS	75-76
BUMPERS	
FRONT	33, 36
REAR	55
COVERS	14-15
GAS CAP	35
GOGGLE HOLDER	19
HAND GRIPS	35
HAND GUARDS	34, 44
HITCH KIT	25
MIRRORS	33, 40
MUFFS	19
SHOCKS	50-51
SKID PLATES	38
SNOWFLAP	40
SWITCH GUARDS	62
TANK PADS	37
TOW HITCH	22
TRACKS	66-67
TUNNEL FLARES	39

F

FUEL	
DE-ICER	83
FUEL CAN	37

H

HAND GUARDS	34, 44
HANDLEBAR	
BAR RISERS	35
GRIPS	35
HANDLEBAR KITS	44, 63

L

LUBRICANTS	82-83
------------	-------

M

M, MHC, MA1 FEATURED ACCESSORIES 52-53

BAGS	
HANDLEBAR	18-19
TUNNEL	17
WINDSHIELD	18
BAR RISERS	35
BATTERY CHARGERS	75-76
BUMPERS	
FRONT	33, 36
REAR	55
COVERS	14
HAND GUARDS	34, 44
HEATED SHIELD OUTLET	25
HITCH KIT	25
MIRRORS	33, 40
MUFFS	16
RACK, REAR	25, 36
REAR WHEEL KIT	49
SHOCKS	50-51
SKID PLATES	38
SKIS	37-38
SNOWFLAP	40
SPEEDRACK KIT	24
STUD TEMPLATES	72
SWITCH GUARDS	62
TANK PADS	37
TOW HITCH	22
TRACTION KITS	69
TRACKS	66-67
TUNNEL FLARES	39
TUNNEL PROTECTOR KIT	68
WEAR STRIPS	39
WEARBARS	69-70
WIND DEFLECTORS	39
WINDCREENS	29-30

O

OIL & CARE	
2-CYCLE SYNTHETIC OIL	81
4-CYCLE SYNTHETIC OIL	81
ANTIFREEZE	82
BRAKE FLUID	82
GREASE	83
SHOCK OIL	82

RIOT FEATURED ACCESSORIES 46-47

BAGS	
HANDLEBAR	19
TUNNEL	17-18
COVERS	13
HAND GRIPS	35
HITCH KIT	25
MIRRORS	40
MUFFS	19
OIL & CARE	80-83
RACK, REAR	25, 36
STUD TEMPLATES	72
TRACTION KITS	68-71
TRACKS	66-67

Z

ZR FEATURED ACCESSORIES 65-65

BAGS	
HANDLEBAR	15
TUNNEL	14
WINDSHIELD	15
BAR RISERS	35
BATTERY CHARGERS	75-76
BUMPERS	
FRONT	33, 36
COVERS	14-15
GAS CAP	25-26
GOGGLE HOLDER	15
HAND GRIPS	25
GAS CAP	35

GAS CAP	35
GOGGLE HOLDER	19
HAND GRIPS	35
HAND GUARDS	34, 44
HEATED SHIELD OUTLET	25
HITCH KIT	25
ICE SCRATCHERS	54
MIRRORS	33, 40
MUFFS	19
RACK, REAR	25, 36
RUNNING BOARDS	54
SEAT	55
SHOCKS	50-51
SKID PLATES	38
SKIS	37-38
SNOWFLAP	40
SPEEDRACK KIT	24
SWITCH GUARDS	62
TANK PADS	37
TOW HITCH	22
TRACKS	66-67
TUNNEL FLARES	39
WEAR STRIPS	39
WEARBARS	69-70
WINDCREENS	29-30

ROB KINCAID



FAMILY FOREVER.





All product names, logos, trademarks, and brands are properties of their respective owners. ACT, Alpha One, Arctic Cat, Arctic Power Valve, iACT, APV, Arcticwear, Bearcat, Blast, Boss Cat, Cat's Pride, C-TEC2, C-TEC4, Cross Country, El Tigré, Mountain Cat, Norseman, Pantera, Power Claw, ProClimb, ProCross, Sno-Cross, Sno Pro, Sno-Lock, SpeedLock, SpeedRack, Team Arctic, Thundercat, XT, and ZR are trademarks or registered trademarks of Textron Inc. and its subsidiaries.

WOODY'S LIMITED WARRANTY

INTERNATIONAL ENGINEERING & MANUFACTURING, INC. WARRANTS each product manufactured by it to be free from defects in material and workmanship under use for the purpose for which it is intended. The Company shall not be liable for damage or delays caused by defective materials or workmanship; is limited to the repair or replacement at its factory of defective article or part thereof, which may be returned to the factory, transportation charges prepaid, within one (1) year after delivery to the original purchaser. Proof of purchase is also required. The Company shall be the sole judge of the existence of any defect in the article so returned. No claims for charges incurred in the removal, disassembly or reinstallation of such article shall be allowed. Product manufactured for consumer use on snowmobiles is designed for snow or ice only, use on any other surface voids warranty.

This Warranty shall not cover any article which has been misused or neglected or damaged by accident or any article which has been altered outside the Company's factory. The Warranty for studs is void unless the studs are installed with Woody's installation tools, support plates and lock nuts; according to the recommendations set forth in Woody's Instructions and Template Patterns. This Warranty does not cover bending, chipping, flaking or carbide pin breakage or pin loss from stud wear, stud replacement labor or shipping.

WOODY'S MANUFACTURER WARRANTY RETURNS

The Company shall, in no event be liable for consequential damage or contingent liability arising out of any total or partial failure to function of any article manufactured by it or of any equipment on or in which it is used. Failure of a user to give notice to claim as to defect claimed under the provisions of this Warranty within 1 year after delivery to original user, such claim shall constitute a waiver by consumer of all claims with respect to goods and equipment.

The above warranty is in lieu of all other warranties, expressed or implied, including but not limited to the implied warranties of merchantability and fitness for a particular purpose. In no event will the company be liable for consequential damages whether or not it has notice of the possibility of any such damages.

Follow the Woody's Manufacturer Warranty Returns directions to return any product from International Engineering & Mfg., Inc.


STUD BOY WARRANTY

Liberty Products, Inc. herein noted as The Company, warrants each article manufactured by it to be free from defects in material and workmanship under use for the purpose for which it is intended. The Company shall not be liable for damage or

delays caused by defective materials or workmanship; is limited to the repair or replacement, at its factory, of any defective article or part thereof, which may be returned to the factory; transportation charges, prepaid; within 90 days after delivery to the original user. Proof of purchase is also required. The Company shall be the sole judge of the existence of any defect in the article so returned. No claims for charges incurred in the removal, disassembly or reinstallation of such article will be allowed. Product manufactured for snowmobiling is designed for snow or ice only. Use on any other surface voids warranty. This warranty shall not cover any article which has been misused, neglected, or damaged by accident or any article which has been altered outside The Company's factory. The Company shall, in no event, be liable for consequential damage or contingent liability arising out of any total or partial failure to function of any article manufactured by it or of any equipment on or in which it is used. Failure of a user to give notice to claim as to defect claimed under the provisions of this Warranty within ninety (90) days of the appearance of such claim shall constitute a waiver by customer of all claims with respect to such goods and equipment. No express, implied, or statutory warranty other than that herein set forth is made or authorized to be made by Liberty Products, Inc.

Snowmobiling is serious fun. Be sure to read and understand your owner's manual and please pay special attention to the safety instructions. Arctic Cat Inc. endorses and encourages the safe use of all snowmobiles. Be careful, you can get hurt. Wear a helmet and don't drink and ride. Be aware of natural hazards you may encounter, allow yourself plenty of room to safely stop your snowmobile under all conditions, and maintain your equipment. Your safety is in your hands, so take care. All scenes depicted or described in this brochure were performed by professional riders under carefully controlled conditions. Leave the fancy riding to the pros; they practice for years and train very hard to make it look easy. Never attempt to duplicate these maneuvers or encourage others to do so. We care about your safety and enjoyment of the sport.

PROPOSITION 65 WARNING

 Warning: Cancer and Reproductive Harm - www.P65Warnings.ca.gov. This WARNING applies to all items that can be ordered on this page.

Get approval in minutes for the things you want. Ask your dealer for an application!



ALL ARCTIC CAT MODELS HAVE BEEN EVALUATED BY AN INDEPENDENT TESTING LABORATORY AND MEET ALL SSCC SAFETY STANDARDS IN EFFECT ON THE DATE OF MANUFACTURE.

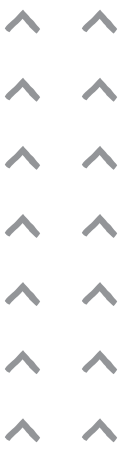
SPONSORED BY THE SNOWMOBILE SAFETY AND CERTIFICATION COMMITTEE, INC.



DES MODÈLES ONT ÉTÉ ÉVALUÉS PAR UN LABORATOIRE D'ESSAIS INDÉPENDANT ET S'ATTAIENENT TOUTES LES NORMES DE SÉCURITÉ DU SSCC EN VIGUEUR À LA DATE DE FABRICATION.

PARRAINÉ PAR LE COMITÉ DE SÉCURITÉ ET DE CERTIFICATION DE LA MOTONEIGE, INC.

** Consumers purchasing a new Arctic Cat snowmobile have the option to include any of the 2021 Arctic Cat accessories in this catalog into the purchase price and will earn the retail financing promotion offered on the new Arctic Cat snowmobile at time of purchase. See dealer for details. Financing programs are offered by FreedomRoad Financial or Sheffield Financial, a Division of Branch Banking and Trust Company. Member FDIC. Subject to credit approval. Approval, and any rates and terms provided, are based on creditworthiness. Other financing offers are available. See your local dealer for details. Rate advertised is based on minimum bureau risk score of 660. Minimum Amount Financed \$1,500; Maximum Amount Financed \$50,000. Other qualifications and restrictions may apply. Financing promotions void where prohibited. Offer effective on eligible Arctic Cat snowmobile accessories financed with a qualifying purchase on all new and unused 2014-2021 Arctic Cat snowmobiles, excluding racing, rental and special service units purchased from a participating U.S. Arctic Cat dealer between 2/1/2020 and 3/31/2021. Offer subject to change without notice. Financing promotions void where prohibited. Monthly payment excludes tax, freight, interest and dealer setup. See dealer for details. All specifications, claims, prices and information contained within are based upon current knowledge as of February 1, 2020, and are subject to change without notice. Prices do not include freight, handling or setup charges. © Arctic Cat Division of Textron Inc., 1451 Marvin Griffin Road, Augusta, GA 30906. Printed in the U.S.A. At Arctic Cat, we're always improving our snowmobiles to provide the best performance and experience. That's why the specifications for 2021 model Arctic Cat snowmobiles in this brochure at the time of printing are subject to change without notice. See your dealer for details. The Arctic Cat snowmobile brand is among the most widely recognized and respected in the industry. The company designs, engineers, manufactures and markets snowmobiles, in addition to related parts, garments and accessories, under the Arctic Cat® brand name. For more information, visit: www.arcticcat.com. Textron Inc. is a multi-industry company that leverages its global network of aircraft, defense, industrial and finance businesses to provide customers with innovative solutions and services. Textron is known around the world for its powerful brands such as Bell, Cessna, Beechcraft, Hawker, Jacobsen, Kautex, Lycoming, E-Z-GO, Arctic Cat, Textron Systems, and TRU Simulation + Training. For more information, visit: www.textron.com.



arcticcat.com

CALL OR VISIT YOUR LOCAL ARCTIC CAT DEALER FOR MORE INFORMATION.
FOR A DEALER NEAR YOU, VISIT ARCTICCAT.COM.

